



PRODUCT BROCHURE 2025



Simplify the Complex®

Contents

Introduction

About Us	4-5
From Concept to Completion	6-7

Our Solutions

Commercial Solution	8-9
TP-710 BACnet Fan Coil Controllers	10-11
ToolBox Commissioning Platform	12-13
Rotary Interface	14-15
Touchscreen User Interfaces	16-19
BACnet Controllers UFH • VAV • Natural Ventilation • Multi-Purpose	20-21
Network Management	22-23
Energy Management	24-25
Smart IO Modules	26-27

Environmental Sensors

Smart Sensors	28-29
TPZ-Net Wireless Sensors	30-31
0-10V CO2 Sensors	32-33
CO2 Indicator	34-35

Terms and Conditions

All sales are subject to Titan Products Ltd. standard terms and conditions. All prices are in £ Sterling (GBP) and are exclusive of VAT, carriage & packing. Titan Products reserve the right to revise prices without notification. Titan Products reserve the right to modify or withdraw any product or service without notification.

All orders are accepted subject exclusively to Titan Products Ltd. terms and conditions of sale which are published on www.titanproducts.com.

Environmental Sensors

Temperature Sensor Overview	36-37
Temperature Sensors	38-43
Humidity Sensors	44-45
Air Velocity & Air Pressure	46-47
Light Level Sensors	48
Liquid Detection	49

Input / Output Modules

IO Modules	50-52
Power Supplies	53

Standalone User Interfaces

User Interfaces	54-55
-----------------	-------

Delivery Options

Standard 1-2 days before 5.30pm	DELIVERY UK MAINLAND (England, Wales & Southern Scotland) (up to 15 Kilos)	9.50
Next Day before 12 noon	DELIVERY UK MAINLAND (England, Wales & Southern Scotland) (up to 15 Kilos)	16.00
Next Day before 10.30am	DELIVERY UK MAINLAND (England, Wales & Southern Scotland) (up to 15 Kilos)	22.00
For other destinations consult sales office.		

WHO WE ARE



Simplify the Complex[®]

At Titan we simplify the complex to help our customers create truly smart spaces promoting wellbeing, comfort and energy efficiency.

Through innovation and continuous investment in technology and people, our intelligent control solutions aid the delivery of smart buildings and create connected spaces.

Our range of HVAC and smart building products and services provide innovative monitoring and control solutions for residential, education, retail, hospitality and healthcare settings.

UK DESIGNED, DEVELOPED & MANUFACTURED

At Titan we are proud that our solutions are all designed, developed and manufactured in the UK allowing first class services and support to be provided alongside the products.

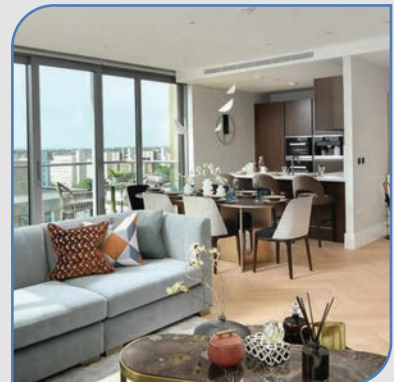
NEW: COMMERCIAL

Our Commercial control and monitoring solutions combines our next generation of fan coil controllers, powerful network management, flexible sensing options, energy management and stylish user interfaces, to provide a one stop solution for all your control needs.



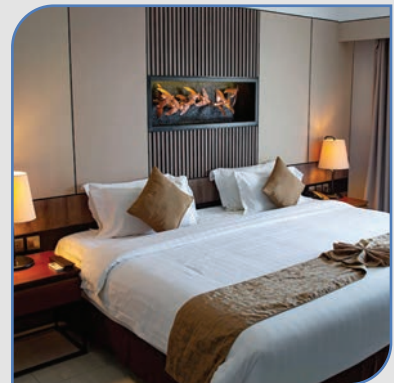
RESIDENTIAL

Our Residential solution combines energy efficient FCU and UFH control for living room, bedrooms and bathrooms for complete property control with stylish user interfaces, utilising interoperable communication with links to BMS and IoT.



HOTEL

The hotel guest room control solution combines networked energy efficient comfort control with high quality user interfaces for both inside and outside of the hotel guest room.



EDUCATION

Our range of Natural Ventilation & Smart Building products combine to provide the perfect solution for learning and working environments where productivity, well-being, comfort and energy efficiency is critical.





FROM CONCEPT TO COMPLETION

At Titan we design and develop our products and services to aid every stakeholder in the delivery of smart and efficient building control. From design, install and commissioning through to end user, facilities managers and building owners , every feature of the solution has been carefully selected and developed to add value to the users experience.

CONSULTANT/DEVELOPER

Titan will work with you to develop the best possible control solution to meet building requirements. We will ensure the project is delivered as intended from day 1 with energy efficient comfort control, fully networked solutions, modern aesthetics and the best possible user experience.

INSTALL

All hardware and software is designed to provide installers with the speed of install and insight they require to hand over to the commissioning team. We work with a team of partners who can provide a smooth and cost effective install.

COMMISSIONING

Commissioning is made easy through Titan's ToolBox commissioning platform, with features such as auto discovery, flexible commissioning routines and the ability to copy profiles from product to product. ToolBox provides all the tools for quick and simple commissioning designed to minimise the amount of site time required.

FACILITY MANAGERS / BUILDING OWNERS

IoT links, trending reports and smart alarming all allow the building managers and owners to have the best possible insights into the building's performance. Flexible integration options allow for this data to be served via on-premise BMS and IoT communication platforms.

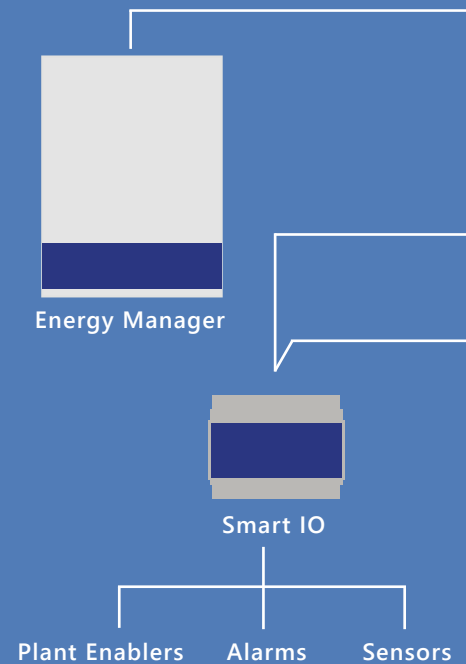
BUILDING OCCUPANTS

All solutions are designed to provide a clean, productive and energy efficient working environment for the building users and occupants.

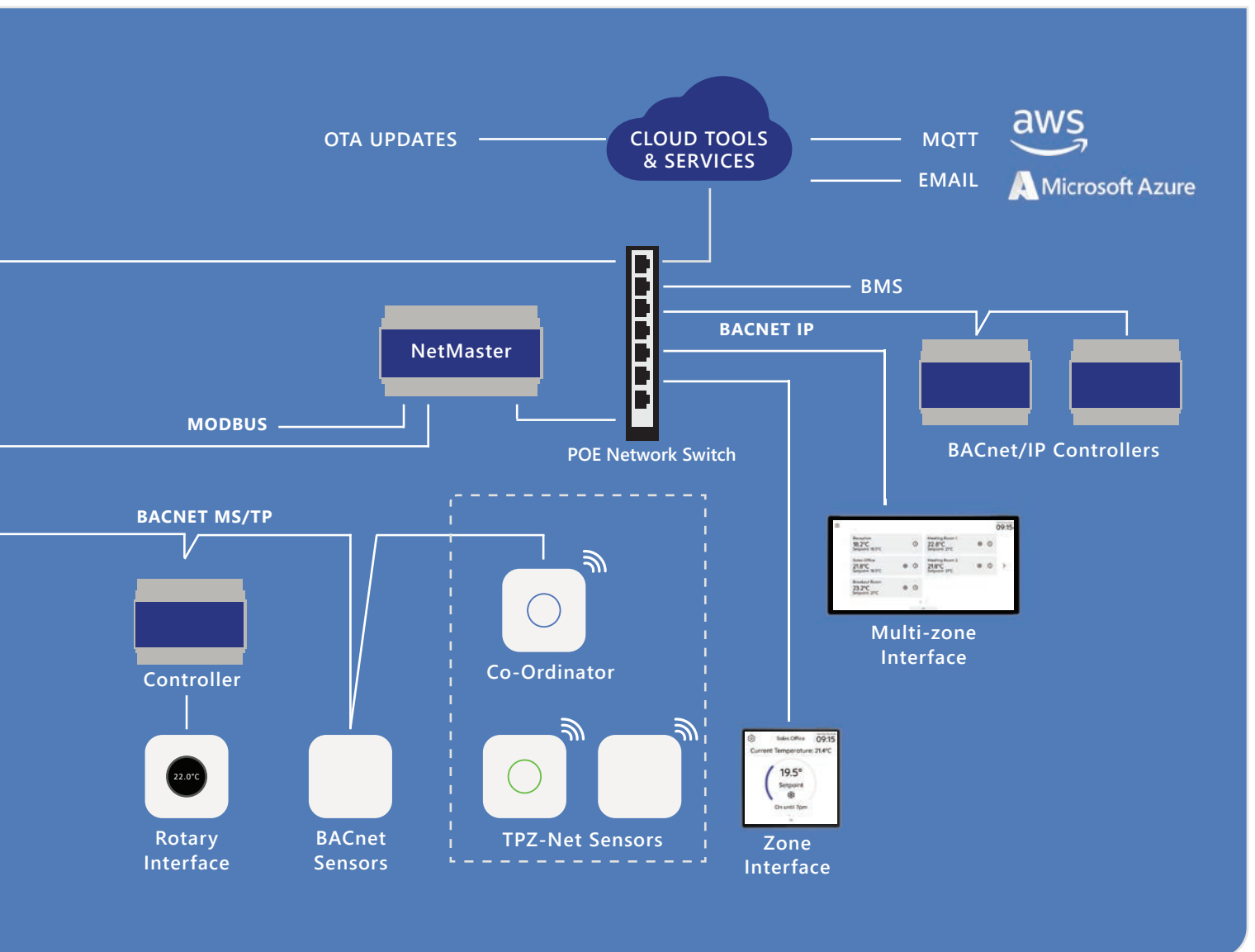


NEW: COMMERCIAL SOLUTION

All aspects covering install, commissioning and usability have been designed with your needs at the forefront of our development focus. Whether the building is a commercial, retail or hospitality environment covering office space, retail outlets or restaurants, the system will provide benefits to all key building stakeholders.



Whether you are looking for a sensing or control application only or a complete solution with network and energy management, the commercial solutions from Titan Products cater for every need.



NEW: TP-710 FAN COIL CONTROLLERS

At Titan, we have been delivering reliable and robust Fan Coil Unit (FCU) controllers for over 20 years. This experience has led us to the development of the TP-710 range of controllers which offer ease of setup, extensive control library options, open BACnet network connectivity and intuitive user interfaces.



TP-710 Controllers for Commercial Applications

The TP-710 controllers offer flexible and energy efficient control for fan coil applications.

Covering 2-pipe and 4-pipe applications, there is the choice of BACnet/IP or BACnet MS/TP communications and a flexible mix of I/O to cater for 0-10V and 24VAC heat/cool actuator type and 0-10V EC fan control.



TP-C-710-IP



TP-C-710

TP-710 Controllers for Residential Applications

Incorporating combined underfloor heating (UFH) with 2 and 4 pipe FCU applications along with the addition of independent bathroom and towel rail control, the TP-710R and TP-710R-IP controllers provide a complete residential control solution for any space.



TP-C-710R-IP



TP-C-710R

Part No.	Description	£
BACnet/IP Fan Coil Controller		
TP-C-710-IP	BACnet fan coil controller with BACnet/IP communications for commercial applications	185.00
BACnet MS/TP Fan Coil Controller		
TP-C-710	BACnet fan coil controller with BACnet MS/TP communications for commercial applications	180.00
BACnet MS/TP Fan Coil Controller c/w Interlocked Fan Relays		
TP-C-710-IFR	BACnet fan coil controller with BACnet MS/TP communications with interlocked fan relays	170.00

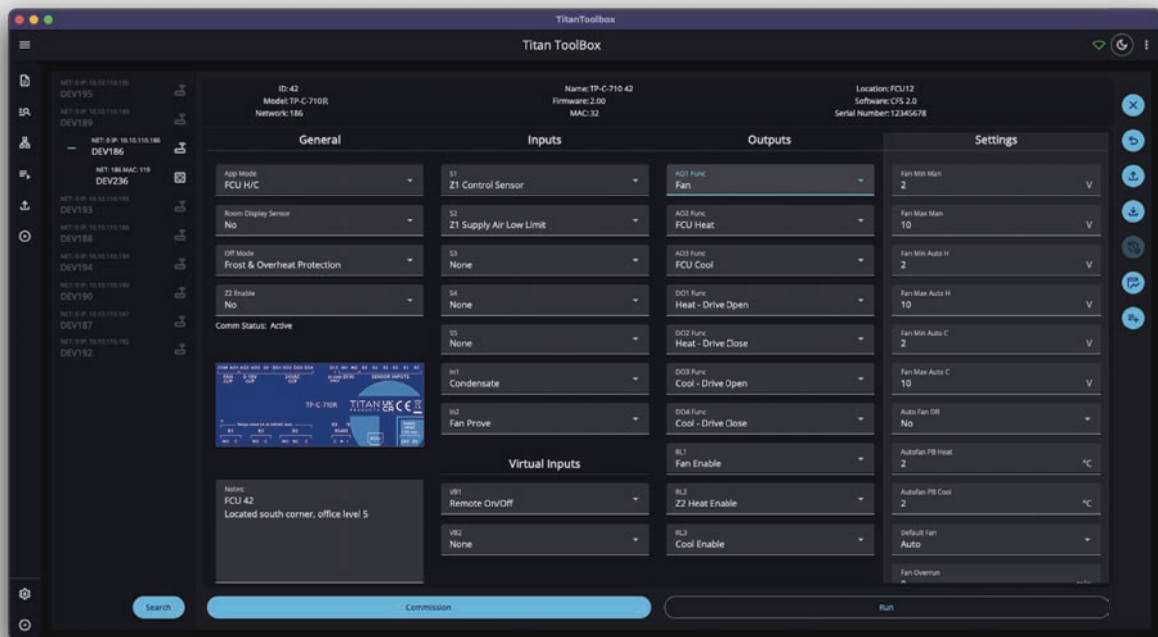
Part No.	Description	£
BACnet/IP Fan Coil / UFH Controller		
TP-C-710R-IP	BACnet fan coil / underfloor heating controller with BACnet/IP communications for residential applications	175.00
BACnet MS/TP Fan Coil / UFH Controller		
TP-C-710R	BACnet fan coil / underfloor heating controller with BACnet MS/TP communications for residential applications	170.00

NEW: TOOLBOX

COMMISSIONING PLATFORM

Commission our new TP-710 Fan Coil Controllers within minutes using our new commissioning platform ToolBox.

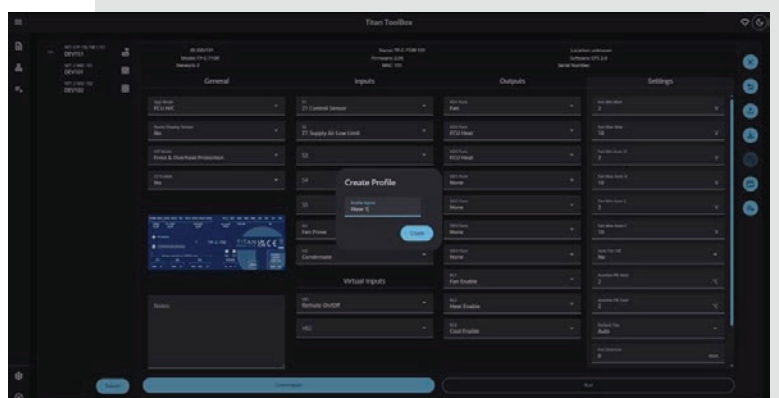
Quickly identify and configure controllers, effortlessly create and copy control profiles and fine-tune control functions.



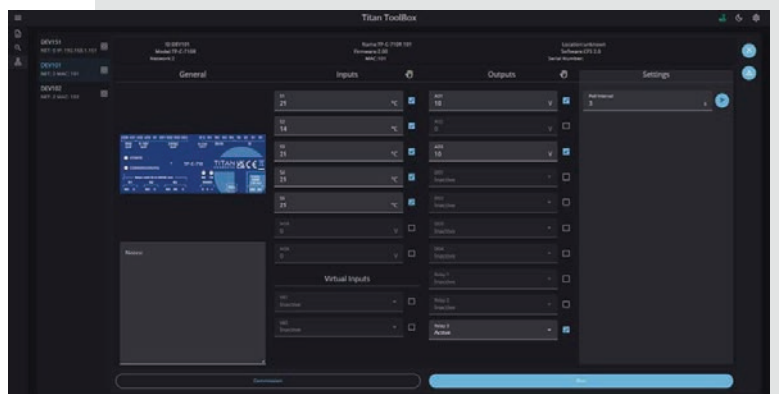
Features of ToolBox include:

- Auto discover & address controllers
- Create and copy control profiles
- Prove inputs and outputs
- View control sequences graphically
- Configure multiple controllers across a network from a single location
- Compatible with Titan TP-C-710 controllers

Set up and save control profiles in seconds via commissioning mode



Override and place inputs / outputs in hand to test control functions with run mode



View control strategy in graphical form to visualise the control strategy you build



NEW: ROTARY USER INTERFACE

The full colour LCD display within the rotary dial provides an intuitive user experience via easy to navigate menus and push to select function. Set up is quick with display options configured easily from the device allowing its application to range from a simple set point adjuster to a complete control interface with set point, fan speed and control mode adjust (with heat / cool indication).



INTUITIVE CONTROL

The interface is highly intuitive to use, by simply pressing the dial users can easily switch between setpoint, fan speed and mode adjust menus, while rotating the dial cycles through selection options.



HALO LED INDICATION

As well as displaying an icon to show if heating or cooling is active, the HALO LED can be set to illuminate red when in heating or blue when in cooling. Alternatively, on the CO2 variant, the HALO be used to show traffic light indication of the CO2 levels.



CHOICE OF MODELS

The Rotary Interface is available in white or black enclosures, which are both fully anti-microbial.

As standard the Rotary includes temperature and humidity monitoring, displaying this on wake, with the option for CO2 monitoring to be added.



Rotary Interface

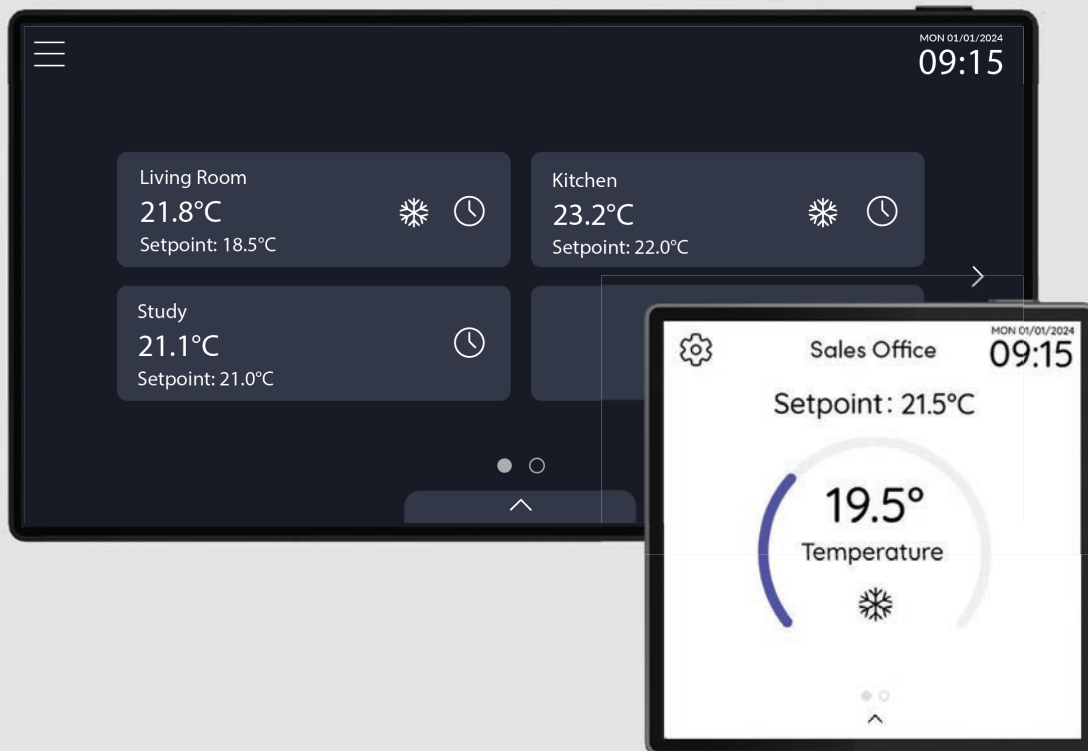


Rotary Interface

Part No.	Description	£
Rotary Interface		
TP-UI-RO	Rotary Interface c/w temperature and humidity monitoring	199.00
Rotary Interface with CO2 Monitoring		
TP-UI-RO-CO2	Rotary interface c/w CO2, temperature and humidity monitoring	275.00

NEW: TOUCH-SCREEN USER INTERFACES

The 7" Touch Screen allows control and scheduling adjustment for multiple spaces while the 4" Touch Screen caters for a single space. Both touch screens combine modern aesthetics, high performance and excellent user experience to provide a networkable user interface for comfort control adjustment when used alongside the Titan TP-710 fan coil controllers and NetMaster.



7" Touchscreen User Interface

The 7" Touch screen is a centrally located comfort control interface, for all zones within a property. Mounted in a single gang electrical back box, the interface is quick and simple to install via POE or 24V power supply.

- **Comfort Control**

Multi-zone control adjustment allows users to easily control set points, modes and fan speed for any zone. The user can also set favourites and group zones for easy navigation

- **Set Time Schedules**

Allows the user to effortlessly set time schedules for each zone, providing ultimate flexibility and integration of the heating and cooling systems

- **Choice of Light or Dark Modes**

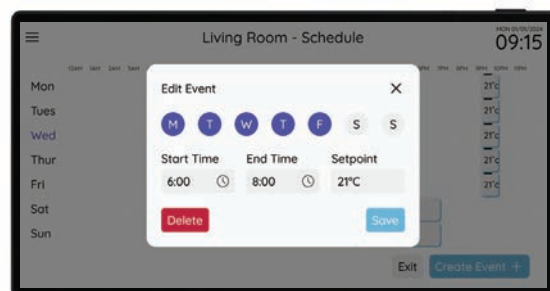
The end user can choose the preferred appearance

- **Proximity and Ambient Light Level Sensors**

The in built sensors adjust the screen settings for optimum display levels



Zone view: Adjust zone comfort parameters



Scheduling: User can effortlessly set time schedules for each zone

4" Touchscreen User Interface

Designed for zonal control of up to 2 zones of control

- **Zonal Comfort Control**

The zonal 4" touch screen offers an intuitive, networked interface for effortless comfort control providing a setpoint, mode and fan speed adjust for the zone

- **Second zone**

For added convenience, bath and towel rail control can be integrated seamlessly through the same interface

- **Fully Synchronised**

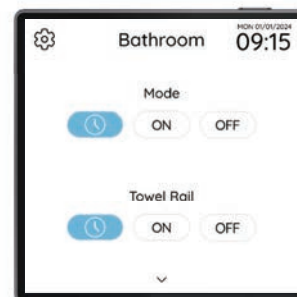
Fully synchronised with the multi-zone 7" display

- **Choice of Light or Dark Modes**

Giving choice to the end user, they can easily select the preferred interface with the settings



Zone 1 fan / mode adjustment



Zone 2 mode adjustment & towel rail (if configured)

TOUCH-SCREEN USER INTERFACES

FOR BOTH COMMERCIAL AND RESIDENTIAL APPLICATIONS



7" Touchscreen User Interface

Designed for both residential & commercial applications, the TP-UI-TS-7 central touch screen combines modern aesthetics, high performance and excellent user experience.



TP-UI-TS-7

4" Touchscreen User Interface

Designed to work with the TP-C-710 controllers, the zonal 4" touch screen offers an intuitive, networked interface for effortless comfort control providing a setpoint, mode and fan speed adjust.



TP-UI-TS-4

Room Display Units (RDU)

Allows zonal adjustment of comfort control with residential, commercial and hotel applications.



RDU-Touch

DND Corridor Plate

Hotel corridor plate with Make Up Room, Do Not Disturb and Guest Room Number integration.



DND-Touch

Part No.	Description	£
7" Touchscreen User Interface (for use with TP-710 controllers)		
TP-UI-TS-7	7" Multi-zone Comfort Control Touch Screen	620.00

Part No.	Description	£
4" Touchscreen User Interface (for use with TP-710 controllers)		
TP-UI-TS-4	4" Zonal Comfort Control Touch Screen	319.00

Part No.	Description	£
Room Display Unit (for use with TP-710 controllers)		
RDU-Touch	RDU-Touch room display unit	290.00
Note: Add /W for white RAL9016 metal surround or /B for black RAL9005 metal surround Other finishes available, please contact the sales team for details.		

Part No.	Description	£
DND-Touch Hotel Corridor Plate (for use with TP-710 controllers)		
DND-Touch	DND-Touch hotel corridor display unit for MUR & DND indication	290.00
Note: Add /W for white RAL9016 metal surround or /B for black RAL9005 metal surround Other finishes available, please contact the sales team for details.		
RDU-Touch/Hub for Multi-Drop		
RDU-T/Hub	RDU-Touch hub for connecting up to 4 x RDU-Touch or DND-Touch units to a single controller	75.00

BACNET CONTROLLERS

Underfloor Heating • VAV • Natural
Ventilation • Multi-Purpose

Our range of application specific BACnet controllers covers under floor heating (UFH) , variable air volume (VAV), natural ventilation and multi-purpose control applications. All controllers are designed to provide flexible control, while minimising install and commissioning time.

Multi-Zone UFH Controllers

Up to 4 zones of flexible UFH control



MZ-503

VAV Controller

VAV control with CO2 control and re-heat capabilities.



CCM-204/VAV

Natural Ventilation Controller

Multi-zone window/vent control based on temperature/CO2 conditions.



CCM-204/NV

Multi-Purpose Controller

Wide range of HVAC control applications ranging from simple ON/OFF control to multi-stage vent / cool / heat applications



CCM-204/MPC

Part No.	Description	£
MZ-503 BACnet Multi Zone Heating Controller		
MZ-503	MZ-503 BACnet Multi Zone heating controller (4 x zones of heating control)	189.00

Part No.	Description	£
BACnet Variable Air Volume (VAV) Temperature Controller		
CCM-204/VAV	Networkable VAV Controller for VAV boxes: 4 x 0-10V outputs, 2 x triac outputs, 2 x Relay outputs	189.00

Part No.	Description	£
BACnet Air Velocity / Air Pressure Controllers		
CCM-204/NV	2 Zone Natural Ventilation Controller for Cross Flow and Fan Boost applications with real time clock for 0-10V control applications	189.00
NVC-1204	3 Zone Natural Ventilation Controller for 24VDC drive chain applications	189.00

Part No.	Description	£
BACnet Multi-Purpose Controllers		
CCM-204/MPC	Multi-Purpose BACnet Controller: 4 x 0-10V outputs, 2 x Triac outputs, 2 x Relay outputs	184.00

NETWORK MANAGEMENT

BACNET ROUTERS, NETWORK MANAGERS & GATEWAYS

Unlock the full potential of your building automation system with our range of BACnet Routers, Network Managers and Gateways.



BACnet MS/TP to IP Router (TP-NM-D)

Offers powerful and secure BACnet MS/TP to BACnet/IP routing.

NetMaster Network Manager (TP-NM-R-D)

Provides network management within residential control applications.

NetMaster BACnet MS/TP to IP Network Routers

The NetMaster Router effortlessly routes BACnet MS/TP points from connected BACnet peripheral devices to BACnet/IP communication messages.



NetMaster Router

NetMaster Network Managers for Titan Commercial Solution



Commercial NetMaster

NetMaster Network Managers for Titan Residential Solution

Complete network management of residential properties incorporating scheduling, alarming, network mapping and control, with optional energy monitoring.



Residential NetMaster

Modbus to BACnet Gateway

The CCI-2X485 BACnet gateway is designed to convert Modbus RTU registers to BACnet MS/TP points. This allows Modbus compatible devices to be added easily onto a BACnet MS/TP network.



CCI-2X485

Part No.	Description	£
BACnet Routers		
TP-NM-D	NetMaster BACnet MS/TP to BACnet IP Router	415.00

Part No.	Description	£
BACnet Network Managers		
TP-NM-C-D	NetMaster Network Manager (Din rail mounted)	615.00

Part No.	Description	£
BACnet Network Managers		
TP-NM-R-D	NetMaster Network Manager (Din rail mounted)	540.00
TP-NM-R-EM-D	NetMaster Network Manager with Energy Monitoring (Din rail mounted)	615.00

Part No.	Description	£
BACnet Gateway		
CCI-2X485/24V	Modbus to BACnet Gateway 24V supply <i>Supplied with bespoke PC mapping software.</i>	195.00

ENERGY MANAGEMENT

Providing clear insights into your building's energy usage, the Energy Manager allows you to create a clear understanding of the energy usage within your building.

This promotes awareness of energy consumption patterns, enabling users to identify areas of inefficiency. By understanding how energy is being used, building owners, facility managers and tenants can make informed decisions to reduce waste and lower energy bills.



Monthly energy report

Covering: 1 March 2024 to 31 March 2024
User reference: titan@titanproducts.com
Location: Building A

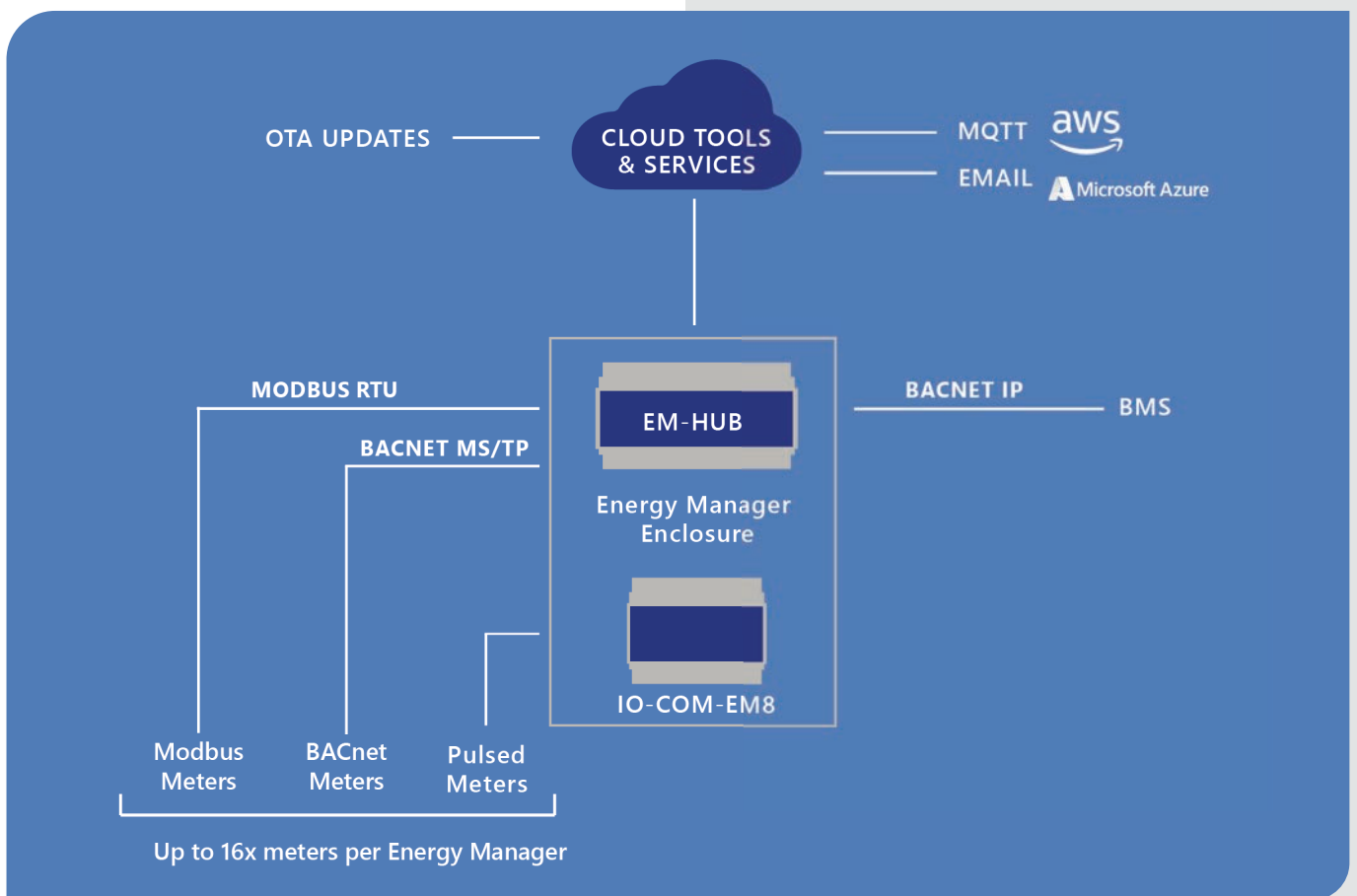
Your electricity usage



Energy Manager

The Energy Manager is a pre-wired enclosure with everything needed to get the solution installed and up and running with minimal on-site time. Each energy manager caters for a combination of up to 16 x BACnet, Modbus, Pulsed, 0-10V or 4-20mA meters.

Bespoke Energy Manager enclosures can be manufactured, fully pre-installed with MID approved single or three-phase din rail mounted CT meters, providing a custom sub-metering solution.

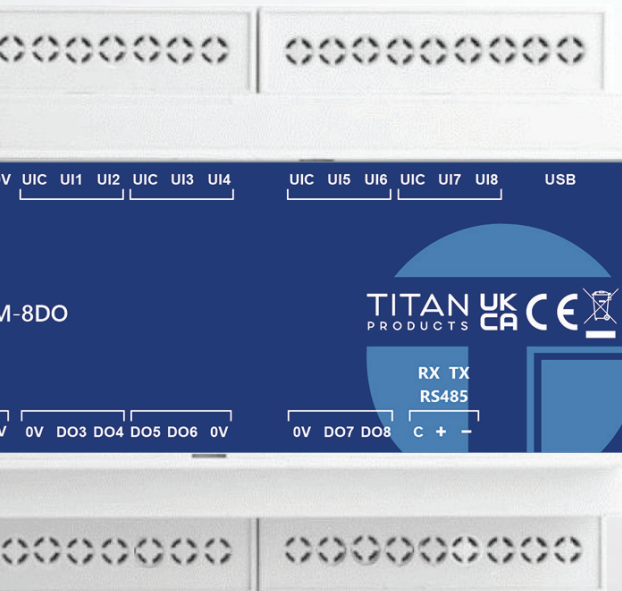


Energy Manager

Part No.	Description	£
Pre-wired Energy Manager		
TP-EM-16	Pre-wired Energy Manager for up to 16 x BACnet, Modbus, Pulsed, 0-10V, 4-20mA meters.	£1,129.00
TP-EM-16-CT-*	Made to order pre-wired Energy Manager for up to 16 x single phase CT meters, or 4 x 3 phase CT meters (a mixture of meters is possible)	POA
Energy Manager IO		
IO-COM-EM8	8-way input module for pulsed, 0-10V and 4-20mA meters.	228.00

BACNET/MODBUS IO MODULES

The Smart Input / Output (IO) modules are designed to provide additional and cost effective networkable device points to a BACnet MS/TP or Modbus RTU network.



Flexible Universal Inputs

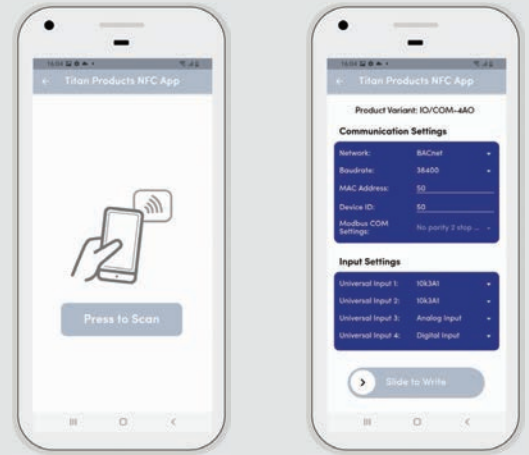
Configurable universal inputs including temperature sensors, analogue or digital inputs

Output Options

Relay, 24V Digital or 10V Analogue
(variant dependent)

Simple Setup

All our Smart IO modules are supplied with Near Field Communication (NFC) capabilities as standard. This allows the IO modules to be set up using a smart phone or tablet via the Titan Commissioning App with the desired setup passed to the Smart IO module instantly, with or without power applied to the units. Alternatively, a PC based setup tool is also available if required



Smart IO Modules

Available with 4 or 8 universal input configurations and choice of output options.



Smart IO Module with 4 x UI



Smart IO Module with 8 x UI

Part No.	Description	£
IO/COM Smart Input Output Modules with 4 Universal Inputs (UI)		
IO/COM-4DO	Smart IO Module with 4 x UI and 4 x Digital Outputs	175.00
IO/COM Smart Input Output Modules with 8 Universal Inputs (UI)		
IO/COM-8AO	Smart IO Module with 8 x UI and 8 x Analogue Outputs	225.00
IO/COM-8DO	Smart IO Module with 8 x UI and 8 x Digital Outputs	225.00
IO/COM-8R	Smart IO Module with 8 x UI and 8 x Relay Outputs	225.00
IO/COM-4AO4DO	Smart IO Module with 8 x UI and 4 x Digital Outputs and 4 x Analogue Outputs	225.00
IO/COM Commissioning Kit		
IO-COMKIT	Commissioning Kit comprising of Smart IO Configuration Tool and USB to Mini USB Cable	15.00

BACNET/MODBUS SMART SENSORS

CO2 • Temperature • Humidity • Air Pressure

Our Smart range of HVAC sensors provide interoperable connectivity by communicating directly onto a BACnet MS/TP or Modbus network.



Smart CO2, Temperature & Humidity Room Sensors

Networkable temperature, CO2 and humidity room sensors with BACnet / Modbus communications.



Smart Room Sensor - Slimline



Smart Room Sensor - Halo

Smart Plant Sensors

Networkable sensors for external, air duct and water pipe applications.



Smart BACnet & Modbus Outside Sensor



Smart BACnet & Modbus Duct Sensor



Smart BACnet & Modbus Differential Pressure Transmitter

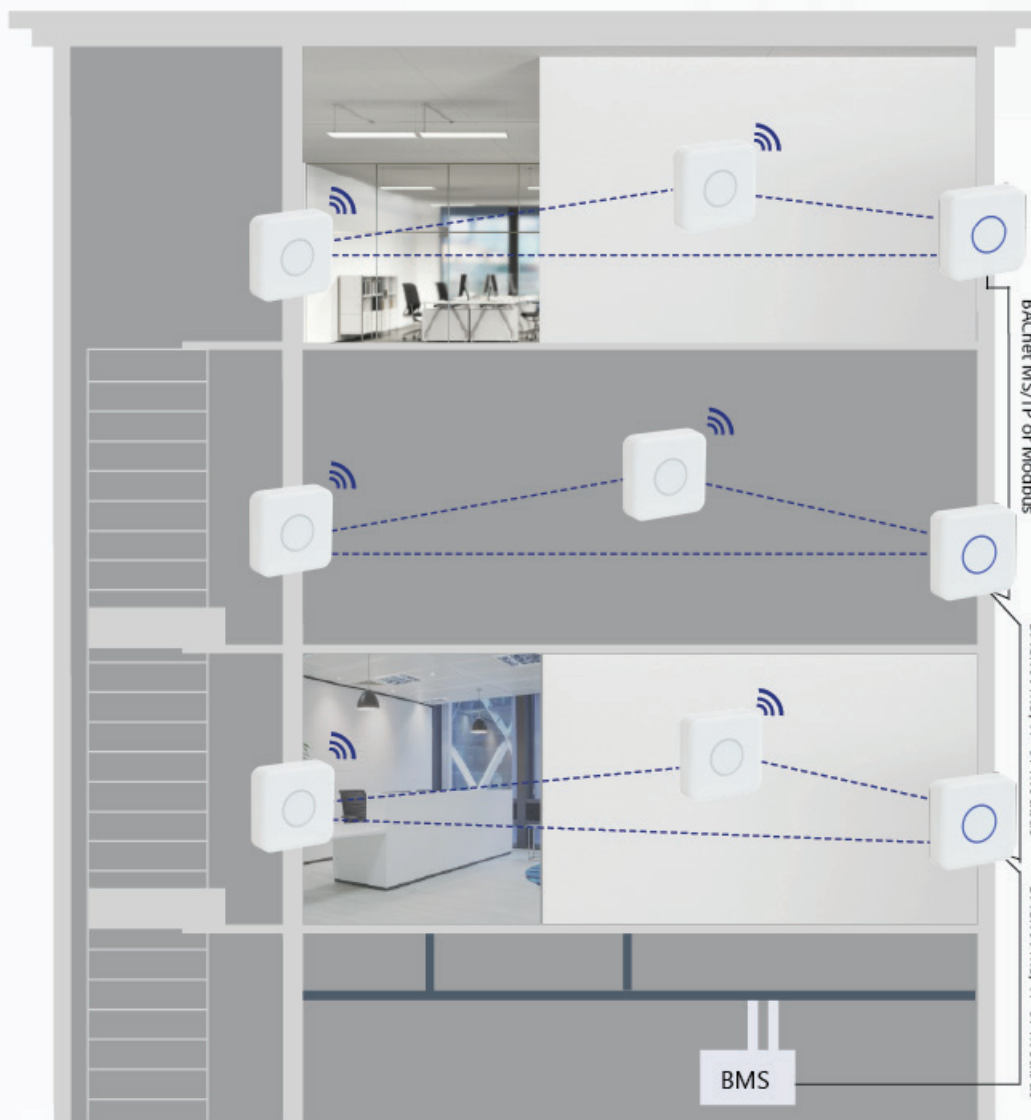
Part No.	Description	£
Smart Temperature & Humidity Sensor		
TP-RS-RHT-BMS	Gen 3 Room Temperature & Humidity Sensor with BACnet / Modbus communications - slimline enclosure	114.00
Supplied as white as standard. For black enclosures add -B to end of part no.		+3.00
Smart CO2 Temperature & Humidity Sensor		
TP-RS-CO2RHT-BMS	Gen 3 Room CO2 Temperature & Humidity Sensor with BACnet / Modbus communications - no LED - slimline enclosure	168.00
Supplied as white as standard. For black enclosures add -B to end of part no.		+3.00
TP-RS-CO2RHT-BMS-H	Gen 3 Room Co2 Temperature & Humidity Sensor with BACnet / Modbus communications - HALO LED	189.00

Part No.	Description	£
Smart BACnet & Modbus Outside Sensors		
TPOHT-COM	Smart Outside Humidity and Temperature sensor with BACnet MS/TP and Modbus RTU communications	189.00
Smart BACnet & Modbus Duct Sensors		
TPDHT-COM	Smart Duct Humidity and Temperature sensor with BACnet MS/TP and Modbus RTU communications	195.00
TPDCO2-COM	Smart Duct CO2 sensor with BACnet MS/TP and Modbus RTU communications	215.00
Smart BACnet & Modbus Differential Air Pressure Transmitters		
TPDPT8/125-COM	4 ranges 0-25, 0-50, 0-100, 0-125Pa with Positive/Negative selection	155.00
TPDPT8/500-COM	4 ranges 0-200, 0-300, 0-400, 0-500Pa with Positive/Negative selection	155.00
Smart BACnet & Modbus Air Velocity Transmitters		
TPAVT8/10-COM	2 ranges 0-5m/s and 0-10m/s Air Velocity Transmitter	155.00
TPAVT8/28-COM	3 ranges 0-15m/s, 0-20m/s and 0-28m/s Air Velocity Transmitter	155.00

WIRELESS: TPZ-NET

CO2 • Temperature • Humidity

The TPZ-Net wireless solution provides on-premise integration of wireless sensors onto building networks. The solution reduces install costs, simplifies commissioning and is built on reliable, building wide communications that are designed for building automation.



TPZ-Net Wireless CO2, Temperature & Humidity Room Sensors

Gen 3 battery powered room sensors, designed to wirelessly communicate to a parent TPZ-Net Co-Ordinator.



TPZ-Net Room Temperature Sensor

TPZ-Net Co-Ordinator

Wirelessly collects information from room sensors and repeaters, transferring data to a BMS via BACnet MS/TP or Modbus communications.



TPZ-Net Co-Ordinator

TPZ-Net Repeater

Increases distance between sensors and co-ordinators by repeating the sensor messages and adding mesh networking to the wireless network.



TPZ-Net Repeater

Part No.	Description	£
Humidity and Temperature Wireless Sensors (TPZ-Net range)		
TP-RS-RHT-TPZ	TPZ-Net Wireless Room Humidity and Temperature Sensor	147.00
Combined CO2, Temperature and Humidity Sensors (TPZ-Net range)		
TP-RS-CO2RHT-TPZ	TPZ-Net Wireless Room Carbon Dioxide (CO2), Temperature and Humidity Sensor	200.00

Part No.	Description	£
Co-Ordinators (TPZ-Net range)		
TP-TPZC	TPZ-Net wall mounted co-ordinator to communicate directly to a BACnet or Modbus BMS (24V supply)	247.00

Part No.	Description	£
Repeaters (TPZ-Net range)		
TP-TPZR	TPZ-Net wall mounted repeater; designed to improve the distance of communication between the TPZ-Net range of products (24V supply)	158.00

Part No.	Description	£
Commissioning (TPZ-Net range)		
TPZ-COMKIT	TPZ-Net Commissioning Kit (includes USB Dongle and PC Commissioning Software)	189.00
Site Survey Kit (TPZ-Net range)		
TPZ-SSK	Battery powered Site Survey Kit for TPZ-Net Sensor range	445.00
Note: a site survey is highly recommended prior to any wireless installation		

0-10V CO2 SENSORS

Carbon dioxide (CO₂) sensors play a vital role in monitoring and controlling indoor air quality levels. While CO₂ sensors are already a valuable tool, those equipped with LED indication, such as our Halo variants, offer the additional benefit of providing real-time visual feedback.



Gen 3 Room CO2, Temperature & Humidity Sensors

Our Gen 3 Room combined CO2, Temperature & Humidity sensors offer a sleek, modern design creating our slimmest CO2 room sensor to date.



Room Sensor - Slimline



Room Sensor - Halo

Duct Mounted CO2 Sensor

Our Duct CO2 Sensors measure carbon dioxide levels in extract duct systems and provides a 0-10V signal depending on the CO2 concentration levels within the duct work.



Duct CO2 Sensor

Part No.	Description	£
Room CO2, Temperature & Humidity Sensors		
TP-RS-CO2RHT-V-10K3	Room CO2 Temperature & Humidity Sensor (0-10V CO2, dual 0-10V and 10K3A1 temp and 0-10V humidity) (Slimline)	144.00
<i>Other element types available on request. Contact Titan Products for details and options.</i>		
Supplied as white as standard. For black enclosures add -B to end of part no.		+3.00

Part No.	Description	£
Room CO2, Temperature & Humidity Sensors with CO2 indication		
TP-RS-CO2RHT-V-10K3-H	Room CO2 Temperature & Humidity Sensor (0-10V CO2, dual 0-10V and 10K3A1 temp and 0-10V humidity) (Halo)	171.00
<i>Other element types available on request. Contact Titan Products for details and options.</i>		

Part No.	Description	£
Duct Mounted CO2 Sensor		
TPVDCO2	Carbon Dioxide Gas Sensor CO2 (duct mounted) 0-10V output for CO2	195.00

For Smart CO2 Sensors see page 29

CO2 INDICATOR

Our Battery Powered CO2 Indicator monitors the carbon dioxide levels in a space and shows these levels via a traffic light LED HALO. Ideal for schools and universities, they provide a visual indication, highlighting if extra ventilation in a space is required.

Battery Powered CO2 Indicator with LED HALO

The LED light will change colour based on CO2 concentration levels. There is no requirement to wire the unit, making it extremely easy and cost effective to install. The CO2 indicator uses a low power consuming CO2 cell, giving it the best possible battery life.



Green HALO

Within recommended levels, indicating air quality and ventilation is good



Yellow HALO

As CO2 levels begin to rise amber will indicate action is required soon as air quality worsens.



Red HALO

Indicates CO2 is above the recommended levels. Increased ventilation is required such as opening a window.



CO2 Indicator



CO2 Indicator on stand

Part No.	Description	£
Battery Powered CO2 Indicator		
TP-IND-CO2	Wireless Battery Powered Room CO2 Indicator - for indication purposes only	135.00

Part No.	Description	£
Stand for CO2 Indicator		
TP-STAND	Optional clear stand for desk mounting the CO2 indicator	6.00

For Wireless CO2 Sensors see page 31

TEMPERATURE SENSORS

We offer a wide range of resistive, 0-10V and 4-20mA temperature sensors. Designed for a wide range of applications, the sensors cover room, outside, clamp-on, duct and immersion options.

Combining modern, slimline aesthetics with Titan's high product quality and reliability, the **Gen 3 Room Sensors** have been designed with you in mind.

Our slimmest room sensor to date

At only 19mm deep the slimline Gen 3 temperature, humidity and CO2 sensors are our slimmest room sensors to date.

LED HALO

Designed as a simple yet informative interface the HALO is the ideal companion for understanding CO2 levels to maximise occupant comfort and well-being.

Anti-microbial properties

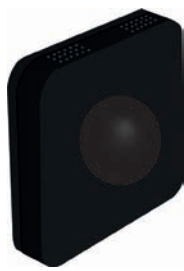
All room housings within the Gen 3 product line incorporate certified Polygiene® product protection, designed to pro-actively inhibit the growth of harmful microbes such as bacteria, viruses and fungi on the sensor surface.





GEN 3 ROOM SENSOR

Low cost sensor available in white or black with a choice of thermistor



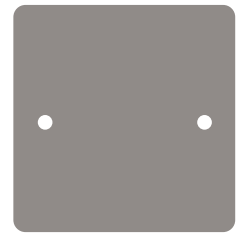
BLACK BULB SENSOR

Designed to measure the temperature of radiant heating systems



ROOM SENSOR SETPOINT

Gen 2 room temperature sensor with setpoint adjuster



ANTI-LIGATURE PLATE SENSOR

The sensor is mounted behind the plate to ensure the product is fully protected

BUTTON SENSOR

Button only to provide discreet temperature sensing, also available on a plate



DISCREET SENSOR

Designed to be wall mounted, the sensor can be lightly skimmed and painted over

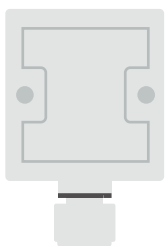


FLYING LEAD SENSORS

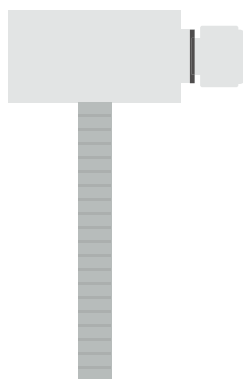
Designed for temperature monitoring in UFH applications, VAV boxes or fan coil units



OUTSIDE SENSOR



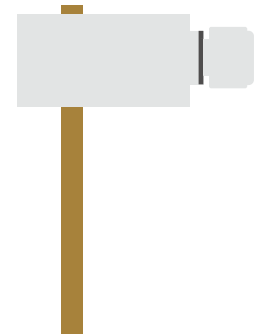
CLAMP-ON SENSOR



DUCT SENSOR



IMMERSION SENSOR



Gen 3 Room Temperature Sensors

The Gen 3 sensors feature a sleek, modern design creating our slimmest room sensor to date.

Designed to accurately measure internal temperature the sensors are available with choice of thermistor options. For the full list of thermistor types available please contact the sales team.



Gen 3 Room Temperature Sensor



Gen 3 Room Temperature Sensor (Black)

Black Bulb Temperature Sensor

The Black Bulb Room Temperature Sensor is specifically designed to measure the temperature of radiant heating systems.



Black Bulb Temperature Sensor

Room Sensor with Setpoint Adjuster

Supplied in our Gen 2 housing, the Room Temperature Sensor with Setpoint Adjuster measures the internal space temperature and offers a 1-11k potentiometer for setpoint adjust.



Room Temperature Sensor with Setpoint Adjuster

Part No.	Description	£
Room Temperature Sensor		
TP-RS-10K3	10K3A1 Room Temperature Sensor (Slimline)	9.45
TP-RS-10K4	10K4A1 Room Temperature Sensor (Slimline)	12.60
TP-RS-20K6	20K6A1 Room Temperature Sensor (Slimline)	12.60
TP-RS-NI1000	NI1000 Room Temperature Sensor (Slimline)	15.75
TP-RS-PT1000	PT1000 Room Temperature Sensor (Slimline)	15.75
Supplied as white as standard. For black enclosures add -B to end of part no.		+3.00

Part No.	Description	£
Black Bulb Temperature Sensor		
TP-RS-BB-10K3	10K3A1 Black Bulb Temperature Sensor	28.35
TP-RS-BB-10K4	10K4A1 Black Bulb Temperature Sensor	29.40
TP-RS-BB-20K6	20K6A1 Black Bulb Temperature Sensor	29.40
TP-RS-BB-NI1000	NI1000 Black Bulb Temperature Sensor	31.85
TP-RS-BB-PT1000	PT1000 Black Bulb Temperature Sensor	31.85

Part No.	Description	£
Room Temperature Sensor with Setpoint Adjuster		
TPTLCR	10K3A1 Room Temperature Sensor with Setpoint Adjuster	31.50
TPALCR	10K4A1 Room Temperature Sensor with Setpoint Adjuster	33.60
TPHLCR	20K6A1 Room Temperature Sensor with Setpoint Adjuster	33.60
TPLCR/NI1000	NI1000 Room Temperature Sensor with Setpoint Adjuster	36.75
TPPT3LCR	PT1000 Room Temperature Sensor with Setpoint Adjuster	36.75

Button and Plate Sensors

Our Button Temperature Sensors can be supplied either on an attractive plate or with the button only to provide discreet temperature sensing.

For the full list of thermistor types available please contact the sales team.



Button Temperature Sensor
Available in Black, White and Stainless Steel



Button Temperature Sensor with Plate
Available in White or Stainless Steel



Anti-Ligature Plate Temperature Sensor
Available in Stainless Steel

Our Anti-Ligature Plate Temperature Sensors are designed to provide robust, anti-ligature properties when measuring indoor temperature conditions in applications such as hospitals, institutions and prisons. Tamper-proof screws can also be added if required.

Discreet Temperature Sensor

The Discreet Temperature Sensor can be lightly skimmed and painted over making it perfect for any residential, commercial or public building application where you require the sensor appearance to be subtle.



Flush Mounted Discreet Sensor



Flush Mounted Discreet Sensor with Flying Lead

Part No.	Description	£
Black Button Sensors		
TPBS (state element)	Black Button Temperature Sensor (10K3A1 or 10K4A1 Thermistor)	13.65
TPBS (state element)	Black Button Temperature Sensor (20K6A1, Ni1000 or PT1000 Thermistor)	16.80
White Button Sensors		
TPWBS (state element)	White Button Temperature Sensor (10K3A1 or 10K4A1 Thermistor)	13.00
TPWBS (state element)	White Button Temperature Sensor (20K6A1, Ni1000 or PT1000 Thermistor)	16.00
TPWBS/P (state element)	White Button Temperature Sensor with flush white plate (10K3A1 or 10K4A1 Thermistor)	23.00
TPWBS/P (state element)	White Button Temperature Sensor with flush white plate (20K6A1, Ni1000 or PT1000 Thermistor)	26.00
Stainless Steel Button Sensors		
TPSSBS (state element)	Stainless Steel Button Temperature Sensor (10K3A1 or 10K4A1 Thermistor)	13.00
TPSSBS (state element)	Stainless Steel Button Temperature Sensor (20K6A1, Ni1000 or PT1000 Thermistor)	16.00
TPSSBS/P (state element)	Stainless Steel Temperature Sensor with flush Stainless Steel plate (10K3A1 or 10K4A1 Thermistor)	38.00
TPSSBS/P (state element)	Stainless Steel Temperature Sensor with flush Stainless Steel plate (20K6A1, Ni1000 or PT1000 Thermistor)	41.00

Part No.	Description	£
Stainless Steel Anti-Ligature Plate Temperature Sensor		
TPSSPS (state element)	Stainless Steel Temperature Plate Sensor (10K3A1, 10K4A1 Thermistor)	31.50
TPSSPS (state element)	Stainless Steel Temperature Plate Sensor (20K6A1, Ni1000, PT1000 Thermistor)	35.00

Part No.	Description	£
Flush Mounted Discreet Temperature Sensor		
TPFMTS (state element)	Flush Mounted Discreet Sensor	19.95
TPFMTS/FL (state element)	Flush Mounted Discreet Sensor c/w 5m Flying Lead	25.00

Immersion Temperature Sensors

Our Immersion Temperature Sensors are designed to measure liquid flow temperatures in pipeworks within plant rooms, boiler rooms and chiller rooms. The immersion sensors can be supplied with 125mm or 65mm length probes and come with an IP65 enclosure which is screwed closed for protection.



Immersion Temperature Sensor 125mm



Immersion Temperature Sensor 65mm

Part No.	Description	£
Immersion Temperature Sensors (Resistive)		
TPTIS/NP	10K3A1 Immersion Sensor 125mm probe (excludes pocket)	18.00
TPTIS/NP/65	10K3A1 Immersion Sensor 65mm probe (excludes pocket)	18.00
TPAIS/NP	10K4A1 Immersion Sensor 125mm probe (excludes pocket)	23.00
TPAIS/NP/65	10K4A1 Immersion Sensor 65mm probe (excludes pocket)	23.00
TPHIS/NP	20K6A1 Immersion Sensor 125mm probe (excludes pocket)	23.00
TPHIS/NP/65	20K6A1 Immersion Sensor 65mm probe (excludes pocket)	23.00
TPIS/Ni1000/NP	Ni1000 Immersion Sensor 125mm probe (excludes pocket)	27.00
TPIS/Ni1000/NP/65	Ni1000 Immersion Sensor 65mm probe (excludes pocket)	27.00
TPPT3IS/NP	PT1000 Immersion Sensor 125mm probe (excludes pocket)	23.00
TPPT3IS/NP/65	PT1000 Immersion Sensor 65mm probe (excludes pocket)	23.00
Immersion Temperature Sensors for chilled water (Resistive)		
TPTIS/R/NP	10K3A1 Immersion Sensor for chilled water 125mm probe (excludes pocket)	27.00
TPTIS/R/NP/65	10K3A1 Immersion Sensor for chilled water 65mm probe (excludes pocket)	27.00
TPAIS/R/NP	10K4A1 Immersion Sensor for chilled water 125mm probe (excludes pocket)	29.00
TPAIS/R/NP/65	10K4A1 Immersion Sensor for chilled water 65mm probe (excludes pocket)	29.00
TPHIS/R/NP	20K6A1 Immersion Sensor for chilled water 125mm probe (excludes pocket)	29.00
TPHIS/R/NP/65	20K6A1 Immersion Sensor for chilled water 65mm probe (excludes pocket)	29.00
TPIS/Ni1000/R/NP	Ni1000 Immersion Sensor for chilled water 125mm probe (excludes pocket)	32.00
TPIS/Ni1000/R/NP/65	Ni1000 Immersion Sensor for chilled water 65mm probe (excludes pocket)	32.00
TPPT3IS/R/NP	PT1000 Immersion Sensor for chilled water 125mm probe (excludes pocket)	29.00
TPPT3IS/R/NP/65	PT1000 Immersion Sensor for chilled water 65mm probe (excludes pocket)	29.00
Immersion Temperature Sensors (0-10V and 4-20mA)		
TPVIS/40/NP	Immersion Sensor - 125mm probe -10+40°C (excludes pocket)	68.00
TPVIS/40/NP/65	Immersion Sensor - 65mm probe -10+40°C (excludes pocket)	68.00
TPIS/40/NP	Immersion Sensor - 125mm probe -10+40°C (excludes pocket)	78.00
TPIS/40/NP/65	Immersion Sensor - 65mm probe -10+40°C (excludes pocket)	78.00

Special Immersion Sensors

We can supply a variety of immersion temperature sensors to suit your application. These include immersion sensor probes to fit Satchwell 1204 pocket and L&G pockets. We can also supply immersion sensors with different diameters such as 5mm, as well as probes in bespoke lengths.

Please contact the sales team with your requirements.

Immersion Sensor Pockets



Stainless Steel Pocket



Brass Pocket

Outside Temperature Sensors

Our Outside Temperature Sensor measures external temperature conditions. As it is exposed to the elements all year round, it is supplied with an IP65 enclosure which is screw closed with the sensor element encapsulated to prevent any damage from condensation or excess moisture forming. This protection on the sensor means it will continue to operate even at low temperatures.



Outside Temperature Sensor

Ceiling Mounted Temperature Sensors

Our Ceiling Mounted Temperature Sensor is compatible with most leading BMS controls and is made to measure temperature conditions in open-plan office areas by having the temperature probe protruding through the false ceiling tiles.



Ceiling Temperature Sensor

Part No.	Description	£
Pockets (fit all Titan Products standard Immersion Sensors)		
TPBP125	Brass Pocket 125mm	13.00
TPSP125	Stainless Steel Pocket 125mm	25.00
TPBP65	Brass Pocket 65mm	17.00
TPSP65	Stainless Steel Pocket 65mm	25.00

Part No.	Description	£
Outside Temperature Sensors (Resistive)		
TPTOS	10K3A1 Outside Sensor (IP65 enclosure)	14.00
TPAOS	10K4A1 Outside Sensor (IP65 enclosure)	19.00
TPHOS	20K6A1 Outside Sensor (IP65 enclosure)	19.00
TPOS/NI1000	NI1000 Outside Sensor (IP65 enclosure)	26.00
TPPT3OS	PT1000 Outside Sensor (IP65 enclosure)	19.00
Outside Temperature Sensor (0-10V and 4-20mA)		
TPVOS/50	0-10V Outside Sensor range -10+40°C (IP65 enclosure)	56.00
TPOS/50	4-20mA Outside Sensor range -10+50°C (IP65 enclosure)	62.00
Solar Guard		
TPSOLG	Solar Guard for Outside Sensors	11.00

Part No.	Description	£
Ceiling Mounted Temperature Sensors		
TPTCM65	10K3A1 Ceiling Mounted Temperature Sensor	58.00
TPACM65	10K4A1 Ceiling Mounted Temperature Sensor	60.00
TPHCM65	20K6A1 Ceiling Mounted Temperature Sensor	60.00
TPCM/NI1000	NI1000 Ceiling Mounted Temperature Sensor	62.00
TPPT3CM65	PT1000 Ceiling Mounted Temperature Sensor	60.00

Duct Temperature Sensors

Our Duct Temperature Sensor measures air flow temperature in duct work areas such as boiler rooms, plant rooms and chiller rooms. The sensor is supplied with either a 150mm or 300mm length probe and an IP65 enclosure, which is screwed closed to protect the sensor.

Special length duct sensors are available along with encapsulated duct sensors on request.



Duct Temperature Sensor 150mm



Duct Temperature Sensor 300mm

Clamp-On Temperature Sensors

Our Clamp-on Temperature Sensor measures the liquid flow temperature in pipework, within low temperature hot water (LTHW) systems. Chilled water versions are also available which are treated to prevent moisture damage from condensation.

The sensor clamps to the pipework via the supplied banding with the sensing element mounted in the stud that sits against the pipework. It is supplied with an IP65 enclosure which is screwed closed to protect the sensor.

The standard banding is designed to fit pipe diameters of 25 – 125mm. Other banding options available on request.



Clamp-On Temperature Sensor

Part No.	Description	£
Duct Temperature Sensors (Resistive)		
TPTDS/S	10K3A1 Duct Sensor 150mm probe	18.00
TPTDS/L	10K3A1 Duct Sensor 300mm probe	20.00
TPADS/S	10K4A1 Duct Sensor 150mm probe	21.00
TPADS/L	10K4A1 Duct Sensor 300mm probe	24.00
TPHDS/S	20K6A1 Duct Sensor 150mm probe	21.00
TPHDS/L	20K6A1 Duct Sensor 300mm probe	24.00
TPDS/NI1000/S	NI1000 Duct Sensor 150mm probe	24.00
TPDS/NI1000/L	NI1000 Duct Sensor 300mm probe	26.00
TPPT3DS/S	PT1000 Duct Sensor 150mm probe	21.00
TPPT3DS/L	PT1000 Duct Sensor 300mm probe	24.00
Duct Temperature Sensor (0-10V and 4-20mA)		
TPVDS/40/S	0-10V Duct Sensor range 0+40°C (150mm probe)	62.00
TPVDS/40/L	0-10V Duct Sensor range 0+40°C (300mm probe)	62.00
TPDS/S/40	4-20mA Duct Sensor range -10+40°C (150mm probe)	76.00
TPDS/L/40	4-20mA Duct Sensor range -10+40°C (300 mm probe)	76.00
Mounting Flange		
TPDMF	Duct Sensor Mounting Flange	11.00

Part No.	Description	£
Clamp-On Temperature Sensor (Resistive)		
TPTCS	10K3A1 Clamp-On Sensor	24.00
TPACS	10K4A1 Clamp-On Sensor	30.00
TPHCS	20K6A1 Clamp-On Sensor	30.00
TPCS/NI1000	NI1000 Clamp-On Sensor	33.00
TPPT3CS	PT1000 Clamp-On Sensor	30.00
Clamp-On Temperature Sensor for Chilled Water (Resistive)		
TPTCS/R	10K3A1 Clamp-On Sensor for chilled water	29.00
TPACS/R	10K4A1 Clamp-On Sensor for chilled water	33.00
TPHCS/R	20K6A1 Clamp-On Sensor for chilled water	33.00
TPCS/NI1000/R	NI1000 Clamp-On Sensor for chilled water	36.00
TPPT3CS/R	PT1000 Clamp-On Sensor for chilled water	33.00
Strap-On Temperature Sensor (0-10V and 4-20mA)		
TPVCS/40	0-10V Clamp-On Sensor range -10+40°C	66.00
TPCS/40	4-20mA Clamp-On Sensor range -10+40°C	87.00

Flying Lead Temperature Sensors

The Flying Lead Temperature Sensor is great for measuring the return and supply of air temperature in fan coils, VAV boxes and small duct applications or as floor limit sensor within underfloor heating applications. All standard Flying Lead Sensors are supplied using Low-Smoke Zero Halogen cabling.



Flying Lead Temperature Sensor



Flying Lead Temperature Sensor with Stainless Steel Cap

For applications that require more protection than the standard flying lead sensors. The cap is manufactured from high grade 316 stainless steel.



Submersible Flying Lead Temperature Sensor

For use in cold water storage tanks and is supplied within a completely waterproof, food safe grade sheathing that protects the sensor when fully submersed.

Part No.	Description	£
Flying Lead Temperature Sensor		
TPTVAV/S	10K3A1 Flying Lead 2 metre	11.00
TPTVAV/L	10K3A1 Flying Lead 5 metre	13.00
TPAVAV/S	10K4A1 Flying Lead 2 metre	11.00
TPAVAV/L	10K4A1 Flying Lead 5 metre	13.00
TPHVAV/S	20K6A1 Flying Lead 2 metre	12.00
TPHVAV/L	20K6A1 Flying Lead 5 metre	14.00
TPVAV/NI1000/S	NI1000 Flying Lead 2 metre	12.00
TPVAV/NI1000/L	NI1000 Flying Lead 5 metre	14.00
TPPT3VAV/S	PT1000 Flying Lead 2 metre	12.00
TPPT3VAV/L	PT1000 Flying Lead 5 metre	14.00
Flying Lead Temperature Sensor with Stainless Steel Cap		
TPTVAV/SS/S	10K3A1 Flying Lead c/w stainless steel cap 2 metre	16.00
TPTVAV/SS/L	10K3A1 Flying Lead c/w stainless steel cap 5 metre	19.00
TPAVAV/SS/S	10K4A1 Flying Lead c/w stainless steel cap 2 metre	16.00
TPAVAV/SS/L	10K4A1 Flying Lead c/w stainless steel cap 5 metre	19.00
TPHVAV/SS/S	20K6A1 Flying Lead c/w stainless steel cap 2 metre	16.00
TPHVAV/SS/L	20K6A1 Flying Lead c/w stainless steel cap 5 metre	19.00
TPVAV/NI1000/SS/S	NI1000 Flying Lead c/w stainless steel cap 2 metre	16.00
TPVAV/NI1000/SS/L	NI1000 Flying Lead c/w stainless steel cap 5 metre	19.00
TPPT3VAV/SS/S	PT1000 Flying Lead c/w stainless steel cap 2 metre	16.00
TPPT3VAV/SS/L	PT1000 Flying Lead c/w stainless steel cap 5 metre	19.00
Submersible Flying Lead Temperature Sensor		
Flying Lead Submersible Temperature Sensor made with food grade polyurethane tube. Temperature range -5 to +70°C		
TPVAV/SUB/2m (state element)	2 metre long with stainless steel cap (all elements)	30.00
TPVAV/SUB/5m (state element)	5 metre long with stainless steel cap (all elements)	36.00

HUMIDITY SENSORS

Our 0-10V and 4-20mA humidity sensors are designed to measure relative humidity within room, outside and duct applications. All sensors provide a second 0-10V or 4-20mA and additional 10K3A1 resistive temperature output as standard.

Gen 3 Room Temperature & Humidity Sensors

Our Humidity Sensors are designed to measure humidity and temperature conditions via 0-10V or 4-20mA outputs. The sensors are fitted with a 10K3A1 thermistor as standard with other resistive output options available on request.



Room Sensor - Slimline

Outside Humidity Sensors



Outside Humidity Sensor

Duct Humidity Sensors



Duct Humidity Sensor

Part No.	Description	£
Room Temperature & Humidity Sensors		
TP-RS-RHT-V-10K3	Room Temperature & Humidity Sensor (dual 0-10V and 10K3A1 temp and 0-10V humidity) (Slimline)	89.25
TP-RS-RHT-MA-10K3	Room Temperature & Humidity Sensor (dual 4-20mA and 10K3A1 temp and 4-20mA humidity) (Slimline)	135.00
<i>Other element types available on request. Contact Titan Products for details and options.</i>		
Supplied as white as standard. For black enclosures add -B to end of part no.		+3.00

Part No.	Description	£
Outside Humidity Sensors		
TPOHT-RT/10K3	Outside Humidity (4-20mA) and Temperature (4-20mA) 10K3 thermistor also fitted*	136.00
TPVOHT-RT/10K3	Outside Humidity (0-10V) and Temperature (0-10V) 10K3 thermistor also fitted*	139.00
<i>*Other element types available on request. Contact Titan Products for details and options.</i>		

Part No.	Description	£
Duct Humidity Sensors		
TPDHT-RT/10K3	Duct Humidity (4-20mA) and Temperature (4-20mA) 10K3 thermistor also fitted*	124.00
TPVDHT-RT/10K3	Duct Humidity (0-10V) and Temperature (0-10V) 10K3 thermistor also fitted*	124.00
<i>*Other element types available on request. Contact Titan Products for details and options.</i>		

For Smart Sensors see pages 32-33

AIR VELOCITY & AIR PRESSURE

The TPDPT8 and TPAVT8 range provide accurate and multi-range air velocity and air pressure measurement. Our 930 range of low cost differential pressure switching are used in HVAC systems to measure fan status and filter conditions.

Air Velocity Transmitters

Offers two selectable ranges for measuring air velocity accurately within air ducts.



TPAVT8

Part No.	Description	£
Air Velocity Transmitter 0-10V and 4-20mA output		
TPAVT8/10	2 ranges 0-5m/s and 0-10m/s Air Velocity Transmitter	125.00
TPAVT8/10/D	2 ranges 0-5m/s and 0-10m/s Air Velocity Transmitter c/w Display	195.00
TPAVT8/10/IP65	2 ranges 0-5m/s and 0-10m/s Air Velocity Transmitter c/w IP65 housing	145.00
TPAVT8/28	3 ranges 0-15m/s, 0-20m/s and 0-28m/s Air Velocity Transmitter	125.00
TPAVT8/28/D	3 ranges 0-15m/s, 0-20m/s and 0-28m/s Air Velocity Transmitter c/w Display	195.00
TPAVT8/28/IP65	3 ranges 0-15m/s, 0-20m/s and 0-28m/s Air Velocity Transmitter c/w IP65 housing	145.00



Multi-Point Probe

Part No.	Description	£
Air Velocity Probe Multi-Point Probe		
TPVPMP/100	Air Velocity Multi-Point Probe - 100mm	27.00
TPVPMP/200	Air Velocity Multi-Point Probe - 200mm	29.00
TPVPMP/300	Air Velocity Multi-Point Probe - 300mm	31.00
TPVPMP/400	Air Velocity Multi-Point Probe - 400mm	33.00
TPVPMP/500	Air Velocity Multi-Point Probe - 500mm	35.00

Differential Pressure Transmitters

All TPDPT8 transmitters have selectable pascal ranges to suit different applications and provide accurate differential pressure monitoring. The standard sensor housing is IP51 rated with an option for LCD display. An IP65 rated TPDPT8 is also available.



TPDPT8



TPDPT8 with Display



TPDPT8 IP65 Enclosure

Differential Pressure Switches

Our 930 range of low differential pressure switches are used in air conditioning systems to measure fan status and filter conditions.



930-80-ATP-300

Part No.	Description	£
Differential Air Pressure Transmitters with Positive/Negative Selection		
TPDPT8/125	4 ranges 0-25, 0-50, 0-100, 0-125Pa with Positive/Negative selection	115.00
TPDPT8/125/D	4 ranges 0-25, 0-50, 0-100, 0-125Pa with Positive/Negative selection c/w display	195.00
TPDPT8/125/IP65	4 ranges 0-25, 0-50, 0-100, 0-125Pa with Positive/Negative selection c/w IP65 enclosure	145.00
TPDPT8/500	4 ranges 0-200, 0-300, 0-400, 0-500Pa with Positive/Negative selection	115.00
TPDPT8/500/D	4 ranges 0-200, 0-300, 0-400, 0-500Pa with Positive/Negative selection c/w display	195.00
TPDPT8/500/IP65	4 ranges 0-200, 0-300, 0-400, 0-500Pa with Positive/Negative selection c/w IP65 enclosure	145.00
Differential Air Pressure Transmitters with Positive/Negative Selection		
TPDPT8/2500	4 ranges 0-1000, 0-1500, 0-2000, 0-2500 with Positive/Negative selection	115.00
TPDPT8/2500/D	4 ranges 0-1000, 0-1500, 0-2000, 0-2500 with Positive/Negative selection c/w display	195.00
TPDPT8/2500/IP65	4 ranges 0-1000, 0-1500, 0-2000, 0-2500 with Positive/Negative selection c/w IP65 enclosure	145.00
Sensor Accessories		
TP/TUBE/4mm	PVC clear tube for use with TPDPT8/125 or 500, including HA models (price per metre)	2.50
TP/TUBE/5mm	PVC clear tube for use with TPDPT8/2500 Transmitters (price per metre)	2.50
TP/P-ADT	Plastic Duct Adaptor for PVC tube (price each)	3.68
TP/CALCERT	Calibration Certificate	30.00

Part No.	Description	£
Differential Air Pressure Switches		
930-80-ATP-300	Range 20-300 Pascals	23.10
Differential Air Pressure Switches with IP65 Housing		
930-80-ATP-300/IP65	Range 20-300 Pascals (IP65 option)	39.90
Mounting Brackets		
930-BRACKET-L/M	Metal 930 Bracket	3.15
930-BRACKET-L/P	Plastic 930 Bracket	3.68

LIGHT LEVEL

Our external light level sensors are designed for installation in commercial and industrial properties. They're designed to sense light levels and provide a scaled output.

External Light Level Transmitters



External Light Level Transmitter

Part No.	Description	£
External Light Level Transmitters		
TPVLLO	External Light Level Transmitter (IP65 enclosure 0-10V output, range selectable)	69.00
TPLLO	External Light Level (IP65 enclosure 4-20mA loop output, range selectable)	69.00

LIQUID DETECTION

Our liquid detection range comprises of a Liquid Detection Module and sensors such as our rain detection sensor. Upon detecting liquid the module provides a switched output allowing an alarm to be raised.

Liquid Flood/Rain Detection



LDM1

This module is available in 24V or 240V supply versions and can be used with sensors specifically made to operate with conductive liquids.



TPRD1

Detects the presence of rain and incorporates a heater to evaporate any residual moisture after a rainfall, which speeds up the dry detection rate.

Part No.	Description	£
Liquid Detection Modules		
LDM1/24	Liquid Detection Module with single changeover relay for rain/flood applications 24V supply	65.00
LDM1/240	Liquid Detection Module with single changeover relay for rain/flood applications 240V supply	80.00
Flood Detection Probe		
TPFD/P	Liquid/Flood Detector Probes stainless steel with IP65 termination box	33.00
Rain Detectors		
TPRD1	Rain Detector IP65 housing for use with LDM modules	31.00
TPRD1/A	Rain Detector IP65 housing compatible with our Natural Ventilation BACnet controllers	89.00

IO MODULES

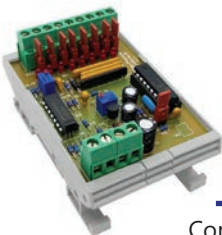
We manufacture a wide selection of IO Modules including digital input modules, analogue output modules, analogue to relay output modules, digital output relay modules and single/double pole relays.

Digital Output Modules



IO/DIM4

Converts 4 digital input signals into a single multiplexed/analogue output



IO/DIM6-8

Converts 6 or 8 digital input signals into a single multiplexed 0-10V or 4-20mA output

Part No.	Description	£
Digital Input Multiplexers		
IO/DIM4	4 x Volt free Digital inputs providing 0-10V output (24V AC or DC supply)	37.00
IO/DIM4/OI	4 x Opto isolated inputs 50V max providing 0-10V output (24V AC/DC supply)	45.00
IO/DIM6-8	6 or 8 Volt free Digital inputs providing 0-10V or 4-20mA output (24V AC or DC supply)	54.00

Analogue Output Modules



IO/AX4.1

Converts a 0-10V input signal to 4 x 0-10V outputs in parallel or 3 outputs in sequence



IO/AX4.1S

Converts a 0-10V input signal to 2, 3 or 4 x 0-10V outputs operating in sequence

Part No.	Description	£
Analogue Output Modules		
IO/AX4.1	0-10V input to 4 x 0-10V outputs in unison or 3 outputs in sequence (24V AC/DC supply)	81.00
IO/AX4.1/S	0-10V input selectable 2, 3 or 4 x 0-10V outputs in sequence (24V AC/DC supply)	81.00

Analogue to Relay Output Modules



IO/1RM

Converts a 0-10V signal to digital relay control with a fixed switching point



IO/ARM

Converts a 0-10V signal to digital relay control with an adjustable switching point



IO/2RM

Converts a 0-10V control signal to 2 stage digital relay switching



IO/RM3

Converts a 0-10V control signal to 3 stage digital relay switching

Part No.	Description	£
Analogue to Relay Output Modules		
IO/1RM	0-10V Signal Providing Single Relay Control (24V AC or DC supply)	21.00
IO/ARM	0-10V Signal with Adjustable Switching Relay and slave 0-10V (24V AC or DC supply)	30.00
IO/2RM	0-10V Signal Providing Raise/Lower, High/Low, Binary and TPC Control (24V AC or DC supply)	42.00
IO/RM3	0-10V Signal Input Providing 3 Stage Control or Heat/Cool Control (24V AC/DC supply)	47.00

Digital Output Relay Module



IO/DOM4

Converts a 0-10V control signal to 4 x volt free relay outputs

Part No.	Description	£
Digital Output Relay Modules		
IO/DOM4	0-10V Signal Binary and Sequence of 4 volt free Changeover Relays (24V AC/DC supply)	66.00

Window Actuator Positioning Module



IO/AD3W

Provides an interface between the 0-10V control signals and DC reverse operation/actuators

Part No.	Description	£
Window Actuator Positioning Module		
IO/AD3W/5-75	Window Actuator Positioning Module. Converts 3 x 0-10V inputs to 3 x 24VDC Drive outputs. Drive time of 5-75 seconds.	120.00
IO/AD3W/20-100	Window Actuator Positioning Module. Converts 3 x 0-10V inputs to 3 x 24VDC Drive outputs. Drive time of 20-100 seconds.	120.00
IO/AD3W/30-110	Window Actuator Positioning Module. Converts 3 x 0-10V inputs to 3 x 24VDC Drive outputs. Drive time of 30-110 seconds.	120.00

Single & Double Pole Relays

Our single relay modules can be used to isolate controller outputs for switching plant and equipment. The single relay modules are available with single and double pole changeover contacts and with various coil voltages.



SRM/SP

Single pole Switching Relay

Part No.	Description	£
Single Relays		
SRM/SP/12DC	Single pole Switching Relay rated 8 amp inductive (12V DC supply)	7.50
SRM/SP/24AC	Single pole Switching Relay rated 10 amp inductive (24V AC supply)	7.50
SRM/SP/240AC	Single pole Switching Relay rated 10 amp inductive (240V AC supply)	10.50

Double Pole Relays		
SRM/DP/12DC	Double pole Switching Relay rated 5 amp inductive (12V DC supply)	8.50
SRM/DP/24AC	Double pole Switching Relay rated 5 amp inductive (24V AC supply)	8.50
SRM/DP/240AC	Double pole Switching Relay rated 5 amp inductive (240V AC supply)	13.00

POWER SUPPLIES

Titan Products provide a low cost power supply module used to provide 24V AC for low voltage control applications.

Power Supplies

240V power supply to provide 24V AC for various low voltage control applications. Incorporates fuse protection with a self resetting fuse. Rated at 12VA at 24V.



240AC/24AC/12VA

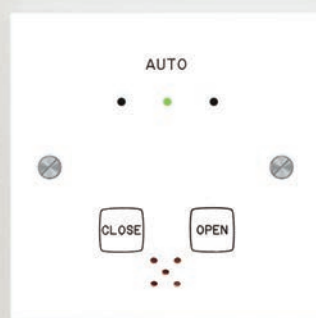
Din Rail Mounted Power Supply

Part No.	Description	£
Power Supplies		
240AC/24AC/12VA	240V to 24VAC Power Supply (12VA) DIN rail mounted	53.00

STANDALONE INTERFACES

We offer a wide range of standalone user interfaces ranging from simple extension timers to remote alarm panels.

Bespoke interfaces are also available on request. Contact Titan with your requirements.



Extension Timer

Designed to extend the normal run-time period of a system, the touch sensitive extension timer operates a set of normally open volt free contacts.



TPEXT1

Window Positioning Unit

Designed to be used as a user interface in conjunction with Titan Products natural ventilation BACnet controllers. The flush single gang plate is designed to override the window or ventilation position within a natural ventilation system.



TP/ACO

Remote Alarm Panel

The RMP incorporates an audible and visual LED indication when an alarm is present with a push button to mute the audible alarm.



RMP/24

Part No.	Description	£
Extension Timers		
TPEXT1/6/24V	0-6 hour Extension Timer with VFC relay, LED indication & remote start option 24V supply	68.00

Part No.	Description	£
Window Positioning Unit		
TPRS/ACO/W	Window positioning unit, white surface mounted room enclosure closed/auto/open	95.00
TP/ACO/F/W	Window positioning unit, white flush mounted closed/auto/open	95.00

Part No.	Description	£
Remote Alarm Panel		
RMP/24	24V AC wire, LED, buzzer, mute button, delay setting.	80.00



PART OF TITAN SMART SOLUTIONS GROUP

+44 (0) 161 406 6480

sales@titanproducts.com

www.titanproducts.com

15 Latham Close, Bredbury Park Ind. Estate,
Stockport, Cheshire, SK6 2SD