

Smart IO Module Configuration Kit



The Smart IO Configuration Tool is a PC based software program that allows simple connection to the Titan Products Smart IO modules from a laptop via USB for quick and intuitive set up and addressing of the IO modules.

The software features include:

- Network addressing
- Universal Input setup
- Override outputs
- Save and load configurations

Connection between the Laptop / PC and the Smart IO device requires a USB to Mini USB cable which is provided as part of the Commissioning Kit.

PC set up requires Window 7 or 10.

Specification

Operating Platform:	Windows 7 or 10
Cable:	USB to Mini USB Cable
Country of origin:	UK
Part code:	IO-COMKIT

Connecting to a Device:

To address and set up the Smart IO modules connect the Smart IO modules to the PC/Laptop via a Mini-USB to USB cable (cable supplied separately within IO/COMKIT). Once connected, run the supplied Smart IO configuration tool and select the COM Port the USB cable is connected to on the PC/Laptop. See Fig 1. below.

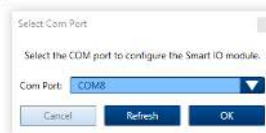


Fig 1

Network Parameters:

To address the IO device for the network select Network Parameters from the tabs on the left of the screen. From here select the Network Protocol, Baud rate, MAC address, Device ID (BACnet only) and the Modbus parity / stop bits (Modbus only).

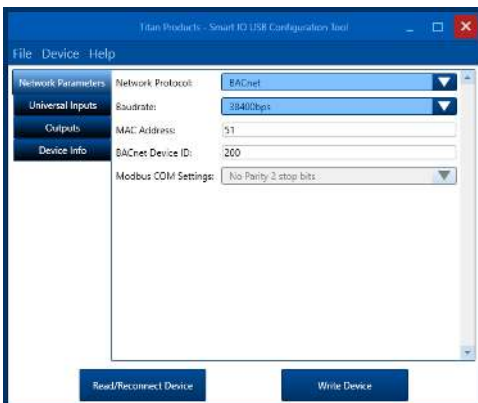


Fig 2

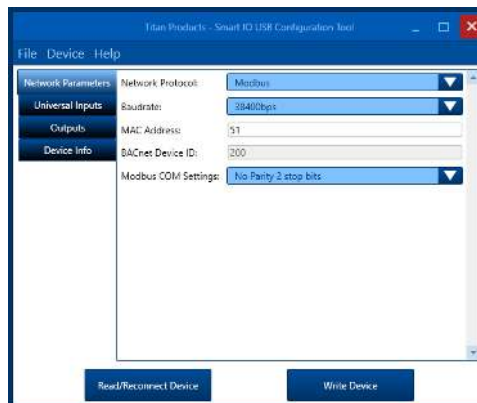


Fig 3

- Images based on Windows 10 operating system being used. If using Windows 7 there may be slight differences in the operation. See notes below:

- The bottom left button is named "Read Device" on Windows 7 instead of "Read / Reconnect Device" on Windows 10

- If using a Windows 7 device, before unplugging the USB cable to plug it back into the same or another device, click Device -> Disconnect Device. If this is not done, the connection will be lost and the software will need to be restarted and USB cable removed and re-inserted.