



SMART IO MODULE CONFIGURATION KIT

IO-COMKIT FEATURES:

- Network addressing
- Universal Input setup
- Override outputs
- Save and load configurations

The Smart IO Configuration Tool is a PC based software program that allows simple connection to the Titan Products Smart IO modules from a laptop via USB for quick and intuitive set up and addressing of the IO modules.

Connection between the Laptop / PC and the Smart IO device requires a USB to Mini USB cable which is provided as part of the Commissioning Kit. PC set up requires Window 7 or 10.

SPECIFICATION

Operating Platform:	Windows 7 or 10
Cable:	USB to Mini USB Cable
Country of origin:	UK
Part code:	IO-COMKIT



CONNECTING TO A DEVICE

To address and set up the Smart IO modules connect the Smart IO modules to the PC/Laptop via a Mini-USB to USB cable (cable supplied separately within IO/COMKIT). Once connected, run the supplied Smart IO configuration tool and select the COM Port the USB cable is connected to on the PC/Laptop. See Fig 1. below.



Fig 1

NETWORK PARAMETERS

To address the IO device for the network select Network Parameters from the tabs on the left of the screen. From here select the Network Protocol, Baud rate, MAC address, Device ID (BACnet only) and the Modbus parity / stop bits (Modbus only).

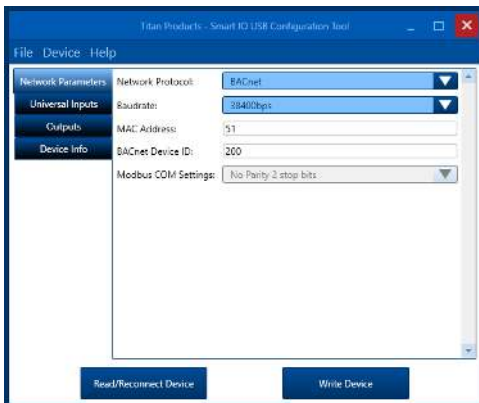


Fig 2

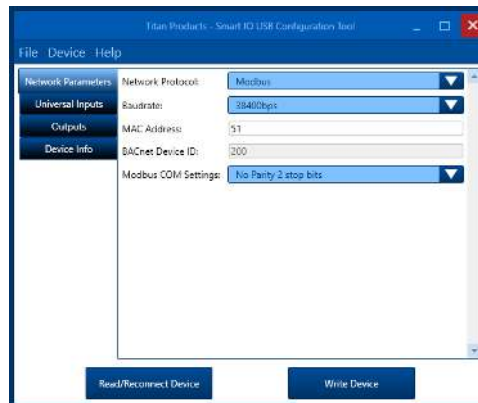


Fig 3

- Images based on Windows 10 operating system being used. If using Windows 7 there may be slight differences in the operation. See notes below:

- The bottom left button is named "Read Device" on Windows 7 instead of "Read / Reconnect Device" on Windows 10

- If using a Windows 7 device, before unplugging the USB cable to plug it back into the same or another device, click Device -> Disconnect Device. If this is not done, the connection will be lost and the software will need to be restarted and USB cable removed and re-inserted.

SETTING UP UNIVERSAL INPUTS

To set up a universal input select Universal Inputs from the tab on the left hand side. All inputs will display their current setup.

Note 1: If the program does not display the devices input status, select Read / Reconnect Device to refresh the displayed values.

For each universal input select the required input type from the drop down menu.

Note 2: If Digital Input is selected, the input will operate as both an ON/OFF contact and a pulse counter with both states available via separate objects / registers within the device.

Once the Network Parameters and Universal Inputs have been set up, click write device to write the parameters to the device. The device will now be discoverable on your network.

Note 3: The universal input configuration can also be set up via the BACnet MS/TP or Modbus RTU network once the devices are addressed and discoverable, if preferred.

Note 4: As default the UI inputs will be set as None.

Note 5: If utilising active 0-10V or 0-20mA inputs, it is recommended to configure the inputs prior to connecting a 0-10V or 0-20mA signal.

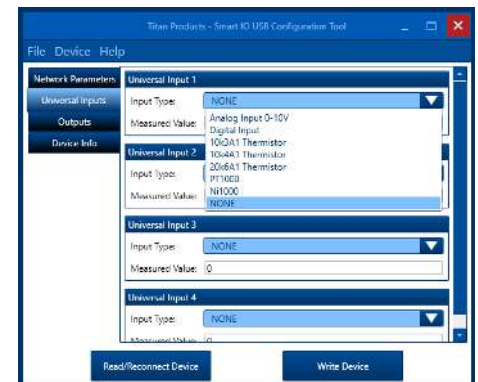


Fig 4

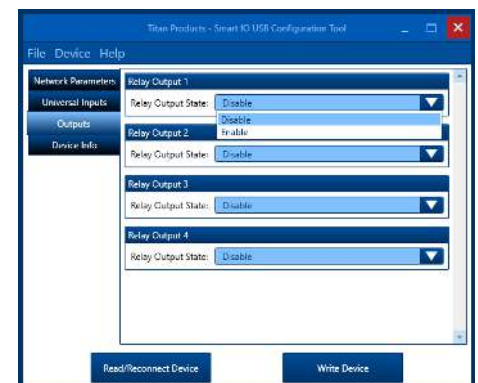


Fig 5

OUTPUT VALUES

The output values can be read or written to via the BACnet MS/TP network, Modbus RTU network or via the Smart IO configuration tool. To view via the tool select Outputs from the tab on the left hand side. From here it is possible to read the current status of the output by selecting Read / Reconnect Device or write a new value to the output by selecting the value required and selecting Write Device.

Note: Please see the BACnet or Modbus manuals for full details on the BACnet points and Modbus registers available within each device.

DEVICE INFO

To view the Smart IO device info select the Device Info from the tab. Device info such as the Product Code, Software, Firmware and Hardware versions will be viewable. See Fig6.

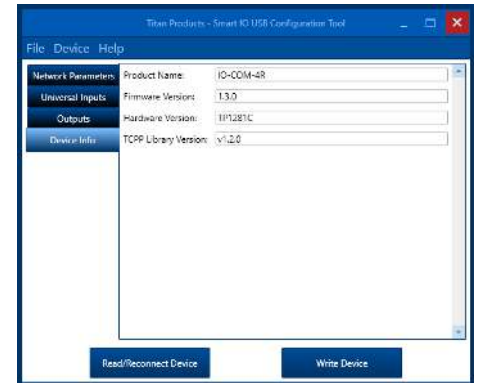


Fig 6

SAVE / LOAD DEVICE CONFIGURATION

Once a device has been set up it is possible to save the configuration and load into another device. To do this select File from the Smart IO configuration tool and save the configuration to your PC/Laptop. To Load this configuration to another device select File > Load Configuration from the Smart IO configuration tool and select the file you wish to upload from the PC/Laptop and click Write Device. This will upload the configuration on to the connected IO device. See Fig7.

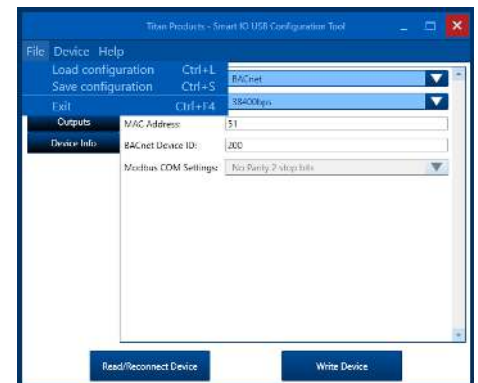


Fig 7

For further install and setup information please contact technical@titanproducts.com