



SMART TEMP & HUMIDITY DUCT SENSOR

TP-DS-RHT-BMS FEATURES

- Accurate measurement of temperature and humidity
- BACnet MS/TP & Modbus RTU communications
- Robust housing designed to be mounted in ductwork
- Quick and simple installation

Featuring a robust housing for duct applications, the TP-DS-RHT-BMS exposes the temperature and relative humidity and temperature environmental measurements directly onto a BACnet MS/TP or Modbus RTU RS485 network.

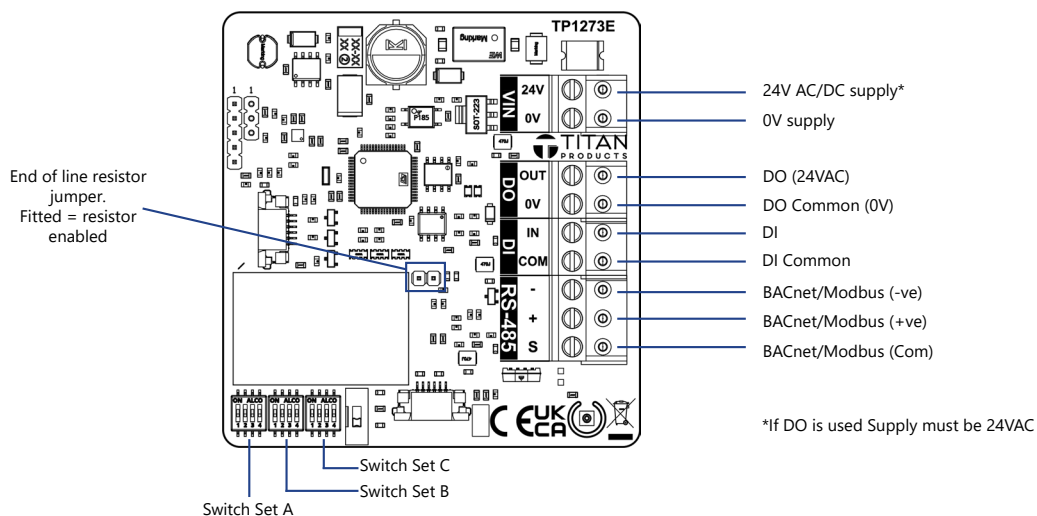
The sensors also incorporate in-built, networkable I/O with 1 x Digital Output (DO) and 1 x Digital Input (DI) allowing flexible on/off environmental and non-environmental control loops to be set up via the BACnet communications.

Easily addressed via the on-board DIP switches, the sensors are ideal for a wide range of applications.

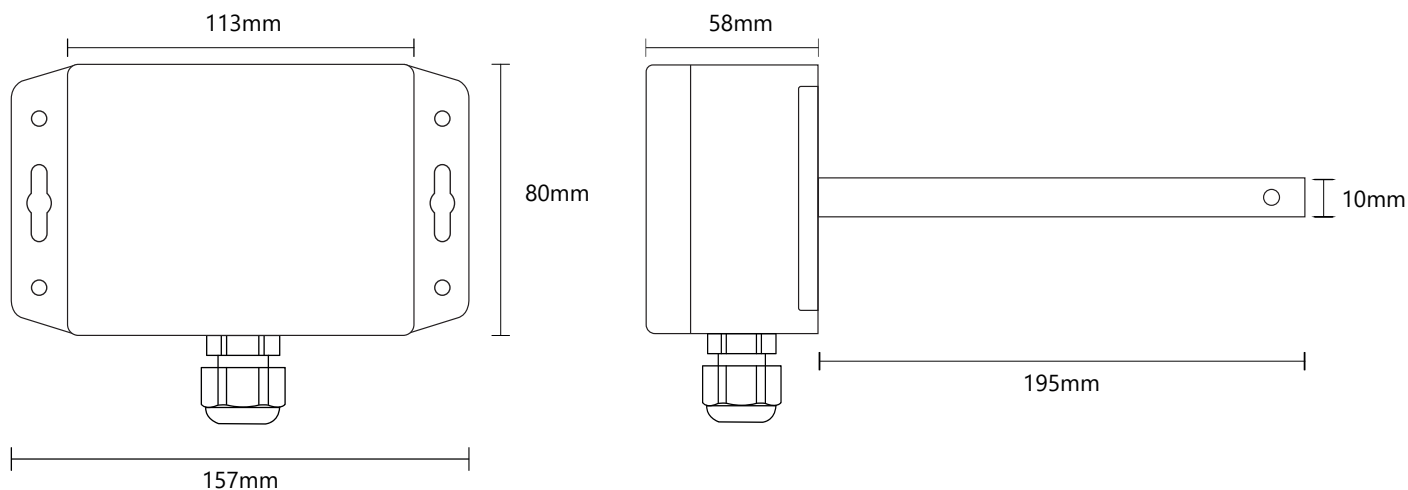
SPECIFICATION

| | |
|---------------------------|--|
| Material: | Flame Retardant Polycarbonate |
| Supply: | 24VAC/DC +/- 10% (AC supply required if using DO) |
| Power Consumption: | 30mA (Does not include DO load if used) |
| Outputs: | BACnet MS/TP or Modbus RTU 1 x DO rated at 80mA |
| Inputs: | 1 x DI |
| Accuracy: | Humidity: +/- 2%RH Temperature: +/- 0.2°C |
| IP Protection: | IP65 |
| Environmental Conditions: | -10 to +60°C 0-95% RH Non-Condensing |
| Connections: | Pluggable screw terminals for 0.3 to 1.5mm cable |
| Recommended Cable: | Screened, twin twisted pair 0.75mm to 1mm. Screen earthed at controller end only. |
| BACnet Baud Rates: | 9600, 19200, 38400, 76800 |
| Modbus Baud Rates: | 9600, 19200, 38400, 57600 |
| Country of Origin: | UK |
| Product Codes: | TP-DS-RHT-BMS |

CONNECTIONS



DIMENSIONS



INSTALLATION AND MAINTENANCE

- The sensor must be installed by a competent and suitably qualified person and maintained within its stated operating environment
- Sensor cables should be segregated from any mains carrying conductors and electrical noise emitting equipment such as fluorescent lighting.
- Ensure correct screw sizes are used.

For further install and setup information please contact technical@titanproducts.com

t: +44 (0)161 406 6480 • e: sales@titanproducts.com • w: www.titanproducts.com

Ref: SKU TP-DS-RHT-BMS