

# TPDPT8 Differential Air Pressure Transmitter (2500)



The TPDPT8 range of air Differential Pressure Transmitters are designed for applications in ventilation/ air conditioning systems, filter monitoring, fan speed control, air pressure monitoring & control and air leak detection systems. The transmitters employ a solid state temperature compensated pressure cell with microprocessor providing superior linearity, measurement accuracy and sensitivity.

The TPDPT8 sensors incorporate zero pressure calibration at the touch of a button and provide multiple ranges with a +/- option that are defined from user selection switches. The TPDPT8/2500 is available with outputs of 0-5V or 0-10V with 4-20mA and an optional LCD display. The standard sensor housing is IP51 with an option for IP65 and each sensor is provided with 2 metres of tube and 2 duct pilot fittings.

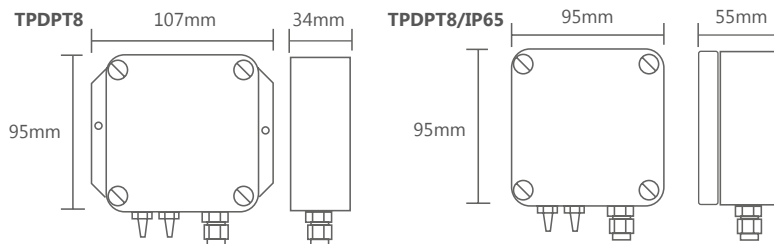
## Features

- 24V AC or DC supply
- Multiple selectable ranges
- Fully calibrated
- Temperature compensated (0°C to +60°C)
- Zero calibration push button
- Digital self dampening
- Outputs 0-5V or 0-10V with 4-20mA
- Optional LCD display for:
  - Display of selected range
  - Display of actual pressure
- IP51 housing with IP65 housing optional
- UK country of origin

## Specification

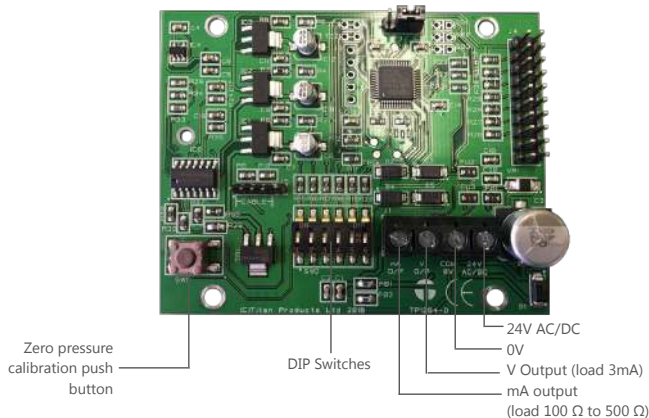
Type	TPDPT8/2500
Selectable Ranges	0-1000Pa, 0-1500Pa, 0-2000Pa, 0-2500Pa
+/- Ranges Selection	Option Switch SW3
Supply	24Volts AC or DC +/- 15%
Power Consumption	Standard: 100mA (Max) With Display: 130mA (Max)
Outputs	0-5V or 0-10V with 4-20mA
Accuracy (Total Error Band @25°C)	+/- 1.5% FSS typical
Non-Linearity/Hysteresis	+/- 0.25% FSS typical
Operating Temperature	-5 to + 50°C
Operating Humidity	0-80% non-condensing
Pressure Overload	50K Pa
Enclosure	Flame retardant ABS IP51 (optional IP65)
Product Code	TPDPT8/2500 (standard housing) TPDPT8/2500/D (standard with display) TPDPT8/2500/IP65 (IP65 housing)

## Dimensions



**Important**  
This is an IP65 rated enclosure  
DO NOT DRILL  
Use fixing holes provided

## Connections



- Note:
- FSS is the full scale range of the sensor which covers from the stated lowest -minus value to the highest +plus value.
  - Non-linearity and Hysteresis is quoted as the best line fit for offset pressure, full scale pressure and 1/2 full scale pressure. Pressure Overload is the maximum pressure which may be applied without causing damage to the sensing element
  - This product is for use on dry gases applications only

## DIL Switch Settings

Switch 1 and 2 are not used

### Pressure Measurement Selection

+/- Selection	SW3
Positive	ON
Positive and negative	OFF

DIL switch 3 is for the selection of positive (only) OR positive and negative measurement of the selected pressure ranges.

### Pressure Range Selection

Pressure	SW4	SW5
+/- 1000Pa	ON	ON
+/- 1500Pa	OFF	ON
+/- 2000Pa	ON	OFF
+/- 2500Pa	OFF	OFF

DIL switches 4 and 5 will be used to select up to four ranges.

### Signal Output Selection

Signal Output Voltage	SW6
0-10 V	ON
0-5 V	OFF

DIL switch 6 is used to configure the signal output voltage range.