

# ACO Window Override Positioning Units

with incorporated 10K3A1 temperature sensor



The ACO Window Override Unit is specifically designed for window ventilation control. The user has the option to manually override the normal window ventilation control by overriding the windows open or closed by pressing the touch sensitive buttons.

The ACO provides a 0-10V positioning signal to the BMS or associated controller and also incorporates a 10K3A1 temperature sensor as standard.

The ACO module is fully compatible with Titan Products' natural ventilation BACnet controllers. A flush mounted single gang version is also available.

The ACO is fully compatible with Titan Products' range of BACnet Natural Ventilation Controllers.

## Specification

Power Supply:	24V AC/DC +/- 10%
Material:	Flame retardant polycarbonate
Power Consumption:	30mA
Output:	0-10V or switch sensor values
Reset Timer:	30 minutes to 3 hours
Temperature Option:	10K3A1* or 0-10V in auto
Temperature Range:	0 - 50°C
LED Indication:	Auto/close/open
Terminals:	1.0mm recommended 2.5mm max
Dimensions:	80mm x 80 mm x 30mm deep
Country of Origin:	UK
Product Codes:	Surface mount TPRS/ACO/W Flush mount TP/ACO/F/W

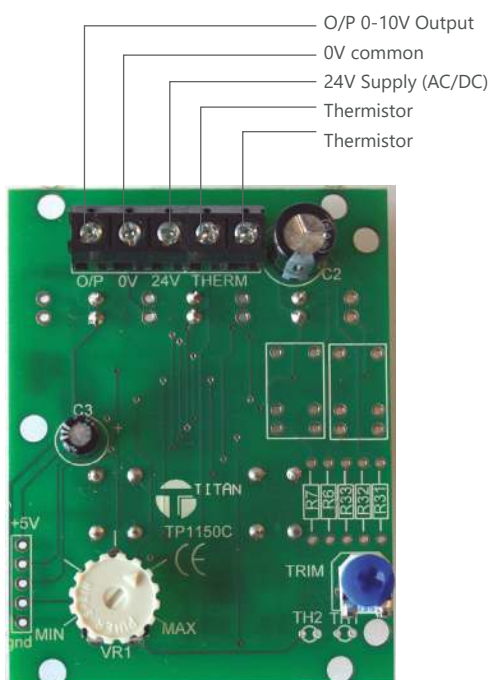


The ACO window override unit is also available in a flush mount assembly. (TP/ACO/F/W).

## Features

- Room sensor enclosure or single gang plate
- LED indication
- User selectable touch sensitive buttons
- 10K3A1 temperature sensor\*
- 0-10V temperature signal in auto
- Delay time setting (reverts to auto)
- Interfaces to window controller

## Connections



## Description of Operation for Window Control

There are 3 settings in the unit which are CLOSED/AUTO/OPEN and each selection is indicated by the appropriate LED.

When in AUTO (the default condition) the corresponding LED will be ON and the temperature sensor output will be a direct reading for the controller or a voltage output 0-10V equivalent to the temperature range (see voltage output below).

### 0-10V Output (Terminal O/P)

The operation of the 0-10V version is as stated above except that the unit operates with a 0-10V output signal which can also represent a temperature range of 0-50°C for the 0-10V signal.

This 0-10V output will also vary in signal level as follows

- < 1V = Closed
- > 9.5V = Open
- 1.5 to 9 Volts (7.5 to 45°C) in Auto

*\*Other thermistor options available on request*